

For Research Use Only

# SULF2 Polyclonal antibody, PBS Only

Catalog Number: 12260-1-PBS

Featured Product



## Basic Information

**Catalog Number:**

12260-1-PBS

**Size:**

100ug, Concentration: 1 mg/ml by Nanodrop;

**Source:**

Rabbit

**Isotype:**

IgG

**Immunogen Catalog Number:**

AG2915

**GenBank Accession Number:**

BC020962

**GeneID (NCBI):**

55959

**UNIPROT ID:**

Q8IWU5

**Full Name:**

sulfatase 2

**Calculated MW:**

870 aa, 96 kDa

**Observed MW:**

50 kDa, 130-150 kDa

**Purification Method:**

Antigen affinity purification

## Applications

**Tested Applications:**

WB, IHC, Indirect ELISA

**Species Specificity:**

human, mouse, rat

## Background Information

SULF2, also named as KIAA1247, belongs to the sulfatase family. It exhibits arylsulfatase activity and highly specific endoglucosamine-6-sulfatase activity. SULF2 can remove sulfate from the C-6 position of glucosamine within specific subregions of intact heparin. SULF2 has several forms: the unglycosylated 100 kDa SULF2, the glycosylated 120-150 kDa SULF2, the cleaved 72-75 kDa and 50 kDa SULF2.

## Storage

**Storage:**

Store at -80°C.

**Storage Buffer:**

PBS only, pH7.3

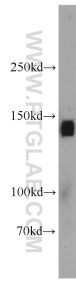
For technical support and original validation data for this product please contact:

T: 1 (888) 4PTGLAB (1-888-478-4522) (toll free in USA), or 1(312) 455-8498 (outside USA)

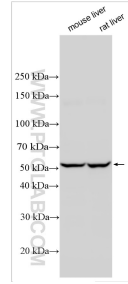
E: [proteintech@ptglab.com](mailto:proteintech@ptglab.com)  
W: [ptglab.com](http://ptglab.com)

This product is exclusively available under Proteintech Group brand and is not available to purchase from any other manufacturer.

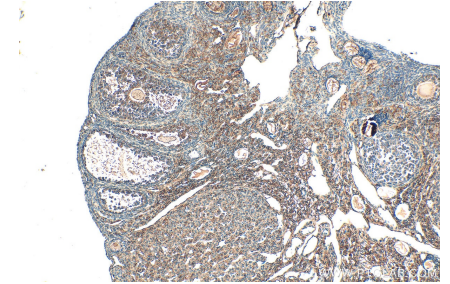
## Selected Validation Data



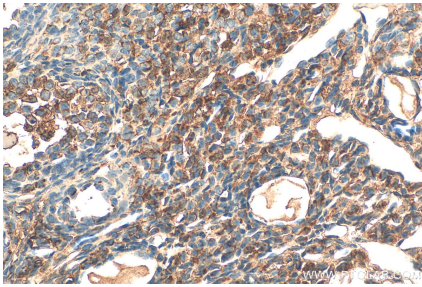
mouse liver tissue were subjected to SDS PAGE followed by western blot with 12260-1-AP (SULF2 antibody) at dilution of 1:500 incubated at room temperature for 1.5 hours. This data was developed using the same antibody clone with 12260-1-PBS in a different storage buffer formulation.



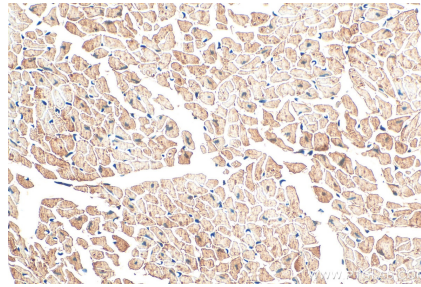
Various lysates were subjected to SDS PAGE followed by western blot with 12260-1-AP (SULF2 antibody) at dilution of 1:3000 incubated at room temperature for 1.5 hours. This data was developed using the same antibody clone with 12260-1-PBS in a different storage buffer formulation.



Immunohistochemical analysis of paraffin-embedded mouse ovary tissue slide using 12260-1-AP (SULF2 antibody) at dilution of 1:200 (under 10x lens). Heat mediated antigen retrieval with Tris-EDTA buffer (pH 9.0). This data was developed using the same antibody clone with 12260-1-PBS in a different storage buffer formulation.



Immunohistochemical analysis of paraffin-embedded mouse ovary tissue slide using 12260-1-AP (SULF2 antibody) at dilution of 1:200 (under 40x lens). Heat mediated antigen retrieval with Tris-EDTA buffer (pH 9.0). This data was developed using the same antibody clone with 12260-1-PBS in a different storage buffer formulation.



Immunohistochemical analysis of paraffin-embedded mouse heart tissue slide using 12260-1-AP (SULF2 antibody) at dilution of 1:500 (under 40x lens). Heat mediated antigen retrieval with Tris-EDTA buffer (pH 9.0). This data was developed using the same antibody clone with 12260-1-PBS in a different storage buffer formulation.