

For Research Use Only

CCT8 Polyclonal antibody

Catalog Number: 12263-1-AP

Featured Product

14 Publications



Basic Information

Catalog Number:

12263-1-AP

Size:

150ul, Concentration: 200 µg/ml by Nanodrop and 147 µg/ml by Bradford method using BSA as the standard;

Source:

Rabbit

Isotype:

IgG

Immunogen Catalog Number:

AG2926

GenBank Accession Number:

BC012584

GeneID (NCBI):

10694

UNIPROT ID:

P50990

Full Name:

chaperonin containing TCP1, subunit 8 (theta)

Calculated MW:

548 aa, 60 kDa

Observed MW:

60 kDa

Purification Method:

Antigen affinity purification

Recommended Dilutions:

WB 1:2000-1:10000

IP 0.5-4.0 ug for 1.0-3.0 mg of total protein lysate

IF 1:50-1:500

Applications

Tested Applications:

IF, IP, WB, ELISA

Cited Applications:

WB, IP, IF

Species Specificity:

human, mouse, rat

Cited Species:

human, rat, mouse

Positive Controls:

WB : A431 cells, mouse kidney tissue, HEK-293 cells, COLO 320 cells, HeLa cells, Jurkat cells, Raji cells

IP : Jurkat cells,

IF : SW480 cells, MCF-7 cells

Background Information

CCT8, also named as C21orf112, CCTQ, KIAA0002, CCT-theta, TCP-1-theta and NY-REN-15, belongs to the TCP-1 chaperonin family. It is a molecular chaperone; assists the folding of proteins upon ATP hydrolysis. As part of the BBS/CCT complex, CCT8 may play a role in the assembly of BBSome, a complex involved in ciliogenesis regulating transports vesicles to the cilia. Known to play a role, in vitro, in the folding of actin and tubulin. (PMID:20080638)

Notable Publications

Author	Pubmed ID	Journal	Application
Alireza Noormohammadi	27892468	Nat Commun	WB
S Kragness	35771867	PLoS One	WB
Sandhya Gopal	30029015	Virology	IP

Storage

Storage:

Store at -20°C. Stable for one year after shipment.

Storage Buffer:

PBS with 0.02% sodium azide and 50% glycerol pH 7.3.

Aliquoting is unnecessary for -20°C storage

*** 20ul sizes contain 0.1% BSA

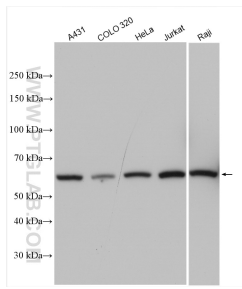
For technical support and original validation data for this product please contact:

T: 1 (888) 4PTGLAB (1-888-478-4522) (toll free in USA), or 1(312) 455-8498 (outside USA)

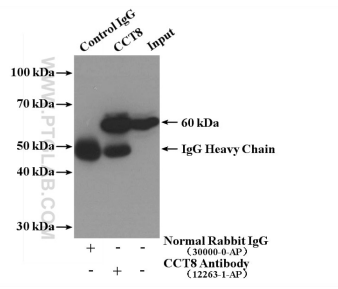
E: proteintech@ptglab.com
W: ptglab.com

This product is exclusively available under Proteintech Group brand and is not available to purchase from any other manufacturer.

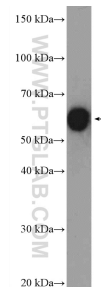
Selected Validation Data



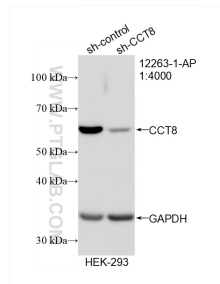
Various lysates were subjected to SDS PAGE followed by western blot with 12263-1-AP (CCT8 antibody) at dilution of 1:5000 incubated at room temperature for 1.5 hours.



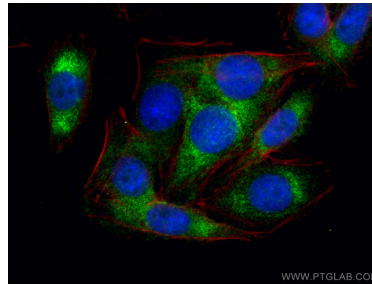
IP result of anti-CCT8 (IP:12263-1-AP, 4ug; Detection:12263-1-AP 1:500) with Jurkat cells lysate 3160 ug.



mouse kidney tissue were subjected to SDS PAGE followed by western blot with 12263-1-AP (CCT8 Antibody) at dilution of 1:1500 incubated at room temperature for 1.5 hours.



WB result of CCT8 antibody (12263-1-AP; 1:1000; incubated at room temperature for 1.5 hours) with sh-Control and sh-CCT8 transfected HEK-293 cells.



Immunofluorescent analysis of (4% PFA) fixed SW480 cells using CCT8 antibody (12263-1-AP) at dilution of 1:200 and CoraLite®488-Conjugated AffiniPure Goat Anti-Rabbit IgG(H+L), CL594-phalloidin (red).