

For Research Use Only

PI16 Polyclonal antibody, PBS Only

Catalog Number: 12267-1-PBS

Featured Product



Basic Information

Catalog Number:

12267-1-PBS

Size:

100ug, Concentration: 1 mg/ml by Nanodrop;

Source:

Rabbit

Isotype:

IgG

Immunogen Catalog Number:

AG2925

GenBank Accession Number:

BC022399

GeneID (NCBI):

221476

UNIPROT ID:

Q6UXB8

Full Name:

peptidase inhibitor 16

Calculated MW:

463 aa, 49 kDa

Observed MW:

49 kDa

Purification Method:

Antigen affinity purification

Applications

Tested Applications:

WB, IHC, ELISA

Species Specificity:

human, mouse

Background Information

Peptidase inhibitor 16 (PI16) is localized to chromosome 6p21.2 in human, which is also called as prostate secretory protein 94-binding protein (PSPBP). It is a member of the cysteine-rich secretory proteins, antigen 5, and pathogenesis-related proteins (CAP) superfamily (PMID: 32779397). PI16 is a cysteine-rich protein that is widely expressed in human tissue (PMID: 18824526). PI16 is involved in extracellular matrix regulation, acts as a tumour suppressor gene and is a new independent prognostic marker of prostate cancer (PMID: 37525118, PMID: 17062675).

Storage

Storage:

Store at -80°C.

Storage Buffer:

PBS only, pH7.3

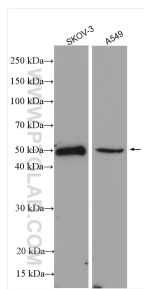
For technical support and original validation data for this product please contact:

T: 1 (888) 4PTGLAB (1-888-478-4522) (toll free in USA), or 1(312) 455-8498 (outside USA)

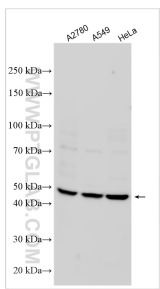
E: proteintech@ptglab.com
W: ptglab.com

This product is exclusively available under Proteintech Group brand and is not available to purchase from any other manufacturer.

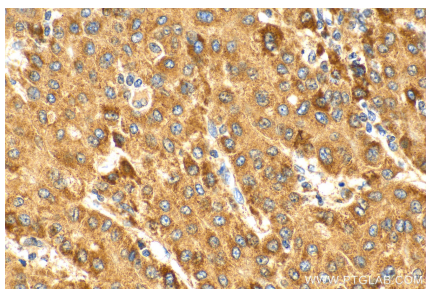
Selected Validation Data



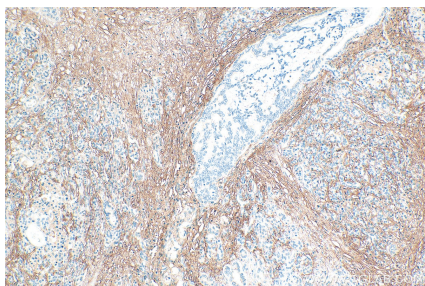
Various lysates were subjected to SDS PAGE followed by western blot with 12267-1-AP (PI16 antibody) at dilution of 1:1000 incubated at room temperature for 1.5 hours. This data was developed using the same antibody clone with 12267-1-PBS in a different storage buffer formulation.



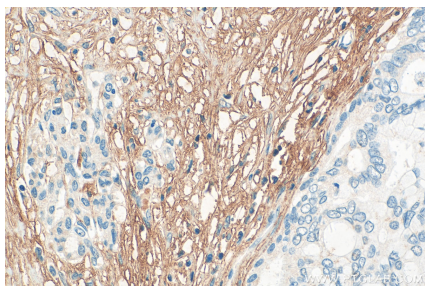
Various lysates were subjected to SDS PAGE followed by western blot with 12267-1-AP (PI16 antibody) at dilution of 1:1000 incubated at room temperature for 1.5 hours. This data was developed using the same antibody clone with 12267-1-PBS in a different storage buffer formulation.



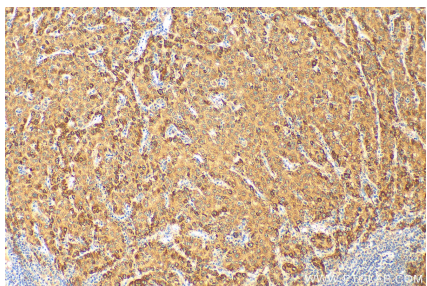
Immunohistochemical analysis of paraffin-embedded human liver cancer tissue slide using 12267-1-AP (PI16 antibody) at dilution of 1:200 (under 40x lens). Heat mediated antigen retrieval with Tris-EDTA buffer (pH 9.0). This data was developed using the same antibody clone with 12267-1-PBS in a different storage buffer formulation.



Immunohistochemical analysis of paraffin-embedded human pancreas cancer tissue slide using 12267-1-AP (PI16 antibody) at dilution of 1:200 (under 10x lens). Heat mediated antigen retrieval with Tris-EDTA buffer (pH 9.0). This data was developed using the same antibody clone with 12267-1-PBS in a different storage buffer formulation.



Immunohistochemical analysis of paraffin-embedded human pancreas cancer tissue slide using 12267-1-AP (PI16 antibody) at dilution of 1:200 (under 40x lens). Heat mediated antigen retrieval with Tris-EDTA buffer (pH 9.0). This data was developed using the same antibody clone with 12267-1-PBS in a different storage buffer formulation.



Immunohistochemical analysis of paraffin-embedded human liver cancer tissue slide using 12267-1-AP (PI16 antibody) at dilution of 1:200 (under 10x lens). Heat mediated antigen retrieval with Tris-EDTA buffer (pH 9.0). This data was developed using the same antibody clone with 12267-1-PBS in a different storage buffer formulation.