

For Research Use Only

# MTHFD2 Polyclonal antibody

Catalog Number: 12270-1-AP

Featured Product

39 Publications



## Basic Information

### Catalog Number:

12270-1-AP

### Size:

150ul, Concentration: 500 µg/ml by Nanodrop;

### Source:

Rabbit

### Isotype:

IgG

### Immunogen Catalog Number:

AG2911

### GenBank Accession Number:

BC017054

### GeneID (NCBI):

10797

### UNIPROT ID:

P13995

### Full Name:

methylenetetrahydrofolate dehydrogenase (NADP+ dependent) 2, methenyltetrahydrofolate cyclohydrolase

### Calculated MW:

350 aa, 38 kDa

### Observed MW:

33-38 kDa

### Purification Method:

Antigen affinity purification

### Recommended Dilutions:

WB 1:1000-1:8000

IP 0.5-4.0 µg for 1.0-3.0 mg of total protein lysate

IHC 1:200-1:800

## Applications

### Tested Applications:

IHC, IP, WB, ELISA

### Cited Applications:

CoIP, IF, IHC, IP, WB

### Species Specificity:

human, mouse, rat

### Cited Species:

human, mouse

**Note-IHC: suggested antigen retrieval with TE buffer pH 9.0; (\*) Alternatively, antigen retrieval may be performed with citrate buffer pH 6.0**

### Positive Controls:

WB: A549 cells, HEK-293T cells, Jurkat cells, mouse testis tissue, rat testis tissue

IP: A549 cells, mouse testis tissue

IHC: human colon cancer tissue,

## Background Information

Methylenetetrahydrofolate dehydrogenase 2 (MTHFD2) is a folate-coupled mitochondrial metabolic enzyme characterized by methylenetetrahydrofolate dehydrogenase and cyclohydrolase activity. It was demonstrated that suppression of MTHFD2 inhibits methylation reactions, decreases protein synthesis and disrupts redox homeostasis, which may ultimately result in significant changes in cellular metabolic phenotype. MTHFD2 is reported to be up-regulated in various tumours, such as lung adenocarcinoma (PMID: 34121323) and breast cancer (PMID: 34007312).

## Notable Publications

Author	Pubmed ID	Journal	Application
Francesc Baixauli	36171294	Nature	WB
Costas Koufaris	30275950	Cancer Metab	WB, CoIP
César Vásquez-Trincado	34550363	Hum Mol Genet	WB

## Storage

### Storage:

Store at -20°C. Stable for one year after shipment.

### Storage Buffer:

PBS with 0.02% sodium azide and 50% glycerol pH 7.3.

Aliquoting is unnecessary for -20°C storage

\*\*\* 20ul sizes contain 0.1% BSA

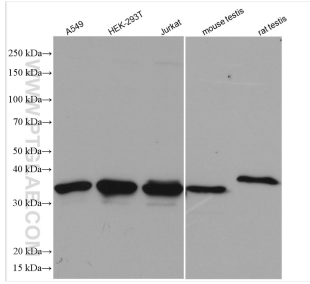
For technical support and original validation data for this product please contact:

T: 1 (888) 4PTGLAB (1-888-478-4522) (toll free in USA), or 1(312) 455-8498 (outside USA)

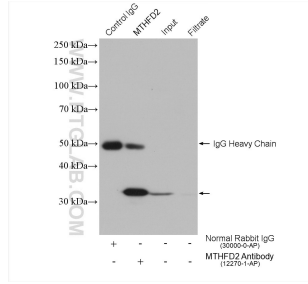
E: proteintech@ptglab.com  
W: ptglab.com

This product is exclusively available under Proteintech Group brand and is not available to purchase from any other manufacturer.

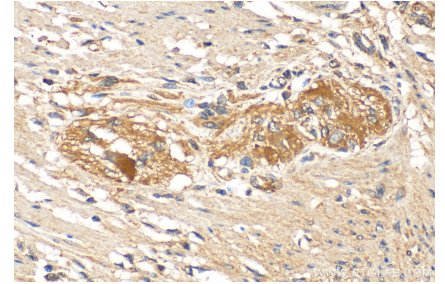
## Selected Validation Data



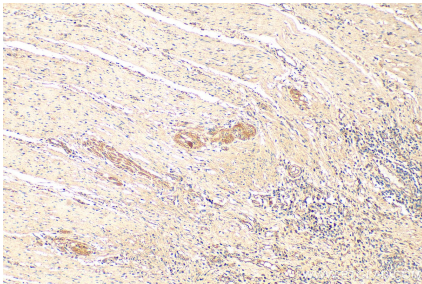
Various lysates were subjected to SDS PAGE followed by western blot with 12270-1-AP (MTHFD2 antibody) at dilution of 1:4000 incubated at room temperature for 1.5 hours.



IP result of anti-MTHFD2 (IP:12270-1-AP, 4ug; Detection:12270-1-AP 1:4000) with A549 cells lysate 1480 ug.



Immunohistochemical analysis of paraffin-embedded human colon cancer tissue slide using 12270-1-AP (MTHFD2 antibody) at dilution of 1:400 (under 40x lens). Heat mediated antigen retrieval with Tris-EDTA buffer (pH 9.0).



Immunohistochemical analysis of paraffin-embedded human colon cancer tissue slide using 12270-1-AP (MTHFD2 antibody) at dilution of 1:400 (under 10x lens). Heat mediated antigen retrieval with Tris-EDTA buffer (pH 9.0).