

For Research Use Only

FIP1L1 Polyclonal antibody

Catalog Number: 12276-1-AP

Featured Product



Basic Information

Catalog Number:

12276-1-AP

Size:

150ul, Concentration: 650 ug/ml by Nanodrop and 240 ug/ml by Bradford method using BSA as the standard;

Source:

Rabbit

Isotype:

IgG

Immunogen Catalog Number:

AG2921

GenBank Accession Number:

BC017724

GeneID (NCBI):

81608

UNIPROT ID:

Q6UN15

Full Name:

FIP1 like 1 (S. cerevisiae)

Calculated MW:

594 aa, 66 kDa

Observed MW:

67 kDa

Purification Method:

Antigen affinity purification

Recommended Dilutions:

WB 1:1000-1:8000

IHC 1:50-1:500

IF/ICC 1:200-1:800

Applications

Tested Applications:

WB, IHC, IF/ICC, ELISA

Species Specificity:

human

Note-IHC: suggested antigen retrieval with TE buffer pH 9.0; (*) Alternatively, antigen retrieval may be performed with citrate buffer pH 6.0

Positive Controls:

WB: HeLa cells, K-562 cells, MCF-7 cells, Jurkat cells, MOLT-4 cells

IHC: human colon cancer tissue, human ovary tumor tissue

IF/ICC: MCF-7 cells,

Background Information

FIP1L1, also known as FIP1, encodes a subunit of the CPSF (cleavage and polyadenylation specificity factor) complex that polyadenylates the 3' end of mRNA precursors. The FIP1L1-PDGFR fusion gene encodes a constitutively activated tyrosine kinase that links the first 233 amino acids of FIP1L1 to the last 523 amino acids of PDGFR. This gene fusion and chromosomal deletion causes some forms of idiopathic hypereosinophilic syndrome (HES) (PMID: 12660384).

Storage

Storage:

Store at -20°C. Stable for one year after shipment.

Storage Buffer:

PBS with 0.02% sodium azide and 50% glycerol, pH7.3

Aliquoting is unnecessary for -20°C storage

*** 20ul sizes contain 0.1% BSA

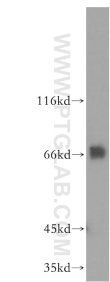
For technical support and original validation data for this product please contact:

T: 1 (888) 4PTGLAB (1-888-478-4522) (toll free in USA), or 1(312) 455-8498 (outside USA)

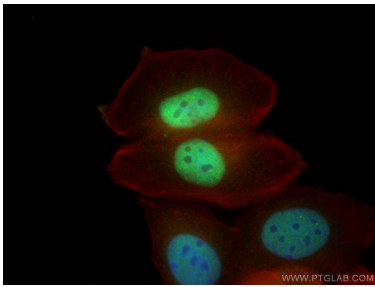
E: proteintech@ptglab.com
W: ptglab.com

This product is exclusively available under Proteintech Group brand and is not available to purchase from any other manufacturer.

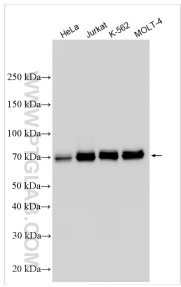
Selected Validation Data



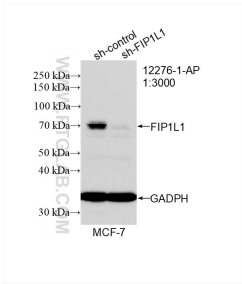
K-562 cells were subjected to SDS PAGE followed by western blot with 12276-1-AP (FIP1L1 antibody) at dilution of 1:300 incubated at room temperature for 1.5 hours.



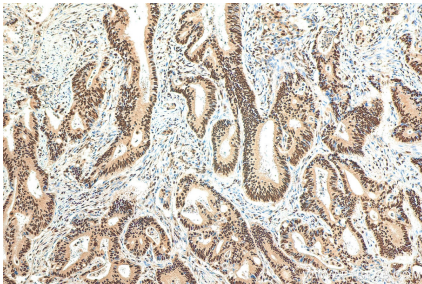
Immunofluorescent analysis of (4% PFA) fixed MCF-7 cells using FIP1L1 antibody (12276-1-AP) at dilution of 1:400 and CoraLite®488-Conjugated AffiniPure Goat Anti-Rabbit IgG(H+L), CL594-Phalloidin (red).



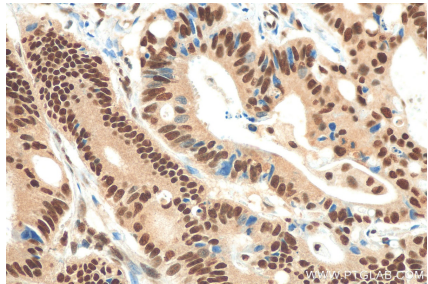
Various lysates were subjected to SDS PAGE followed by western blot with 12276-1-AP (FIP1L1 antibody) at dilution of 1:4000 incubated at room temperature for 1.5 hours.



WB result of FIP1L1 antibody (12276-1-AP; 1:3000; incubated at room temperature for 1.5 hours) with sh-Control and sh-FIP1L1 transfected MCF-7 cells.



Immunohistochemical analysis of paraffin-embedded human colon cancer tissue slide using 12276-1-AP (FIP1L1 antibody) at dilution of 1:200 (under 10x lens). Heat mediated antigen retrieval with Tris-EDTA buffer (pH 9.0).



Immunohistochemical analysis of paraffin-embedded human colon cancer tissue slide using 12276-1-AP (FIP1L1 antibody) at dilution of 1:200 (under 40x lens). Heat mediated antigen retrieval with Tris-EDTA buffer (pH 9.0).