

For Research Use Only

FIP1L1 Polyclonal antibody, PBS Only

Catalog Number: 12276-1-PBS

Featured Product



Basic Information

Catalog Number:

12276-1-PBS

Size:

100ug, Concentration: 1 mg/ml by Nanodrop;

Source:

Rabbit

Isotype:

IgG

Immunogen Catalog Number:

AG2921

GenBank Accession Number:

BC017724

GeneID (NCBI):

81608

UNIPROT ID:

Q6UN15

Full Name:

FIP1 like 1 (S. cerevisiae)

Calculated MW:

594 aa, 66 kDa

Observed MW:

67 kDa

Purification Method:

Antigen affinity purification

Applications

Tested Applications:

WB, IHC, IF/ICC, Indirect ELISA

Species Specificity:

human

Background Information

FIP1L1, also known as FIP1, encodes a subunit of the CPSF (cleavage and polyadenylation specificity factor) complex that polyadenylates the 3' end of mRNA precursors. The FIP1L1-PDGFR fusion gene encodes a constitutively activated tyrosine kinase that links the first 233 amino acids of FIP1L1 to the last 523 amino acids of PDGFR. This gene fusion and chromosomal deletion causes some forms of idiopathic hypereosinophilic syndrome (HES) (PMID: 12660384).

Storage

Storage:

Store at -80°C.

Storage Buffer:

PBS only, pH7.3

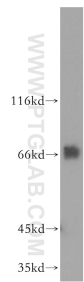
For technical support and original validation data for this product please contact:

T: 1 (888) 4PTGLAB (1-888-478-4522) (toll free in USA), or 1(312) 455-8498 (outside USA)

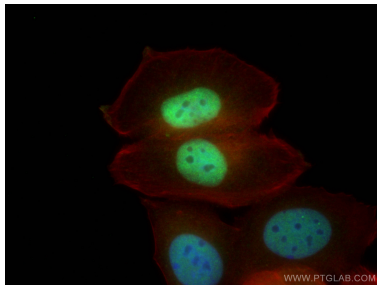
E: proteintech@ptglab.com
W: ptglab.com

This product is exclusively available under Proteintech Group brand and is not available to purchase from any other manufacturer.

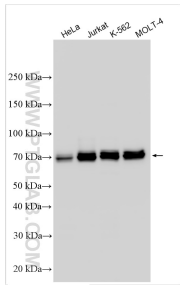
Selected Validation Data



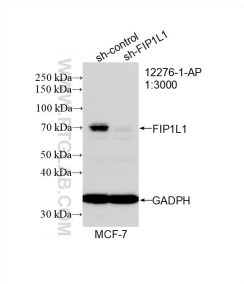
K-562 cells were subjected to SDS PAGE followed by western blot with 12276-1-AP (FIP1L1 antibody) at dilution of 1:300 incubated at room temperature for 1.5 hours. This data was developed using the same antibody clone with 12276-1-PBS in a different storage buffer formulation.



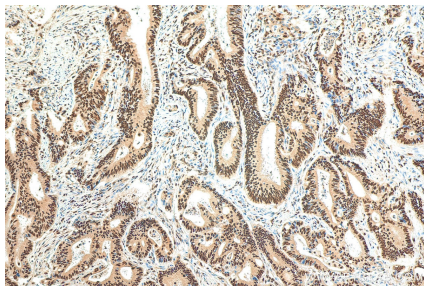
Immunofluorescent analysis of (4% PFA) fixed MCF-7 cells using FIP1L1 antibody (12276-1-AP) at dilution of 1:400 and Coralite®488-Conjugated AffiniPure Goat Anti-Rabbit IgG(H+L), CL594-Phalloidin (red). This data was developed using the same antibody clone with 12276-1-PBS in a different storage buffer formulation.



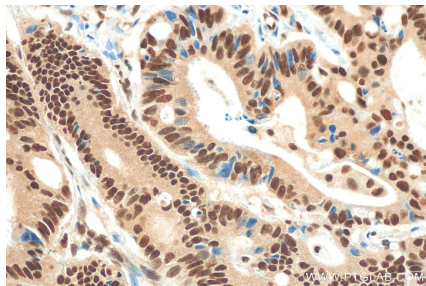
Various lysates were subjected to SDS PAGE followed by western blot with 12276-1-AP (FIP1L1 antibody) at dilution of 1:4000 incubated at room temperature for 1.5 hours. This data was developed using the same antibody clone with 12276-1-PBS in a different storage buffer formulation.



WB result of FIP1L1 antibody (12276-1-AP; 1:3000; incubated at room temperature for 1.5 hours) with sh-Control and sh-FIP1L1 transfected MCF-7 cells. This data was developed using the same antibody clone with 12276-1-PBS in a different storage buffer formulation.



Immunohistochemical analysis of paraffin-embedded human colon cancer tissue slide using 12276-1-AP (FIP1L1 antibody) at dilution of 1:200 (under 10x lens). Heat mediated antigen retrieval with Tris-EDTA buffer (pH 9.0). This data was developed using the same antibody clone with 12276-1-PBS in a different storage buffer formulation.



Immunohistochemical analysis of paraffin-embedded human colon cancer tissue slide using 12276-1-AP (FIP1L1 antibody) at dilution of 1:200 (under 40x lens). Heat mediated antigen retrieval with Tris-EDTA buffer (pH 9.0). This data was developed using the same antibody clone with 12276-1-PBS in a different storage buffer formulation.