

For Research Use Only

SLC25A46 Polyclonal antibody, PBS Only

Catalog Number: 12277-1-PBS

Featured Product



Basic Information

Catalog Number:

12277-1-PBS

Size:

100ug, Concentration: 1 mg/ml by Nanodrop;

Source:

Rabbit

Isotype:

IgG

Immunogen Catalog Number:

AG2923

GenBank Accession Number:

BC017169

GeneID (NCBI):

91137

UNIPROT ID:

Q96AG3

Full Name:

solute carrier family 25, member 46

Calculated MW:

418 aa, 46 kDa

Observed MW:

46 kDa

Purification Method:

Antigen affinity purification

Applications

Tested Applications:

WB, IHC, IF/ICC, Indirect ELISA

Species Specificity:

human, mouse, rat

Background Information

SLC25A46 belongs to the SLC25 family of mitochondrial carrier proteins.

Storage

Storage:

Store at -80°C.

Storage Buffer:

PBS only, pH7.3

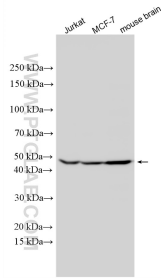
For technical support and original validation data for this product please contact:

T: 1 (888) 4PTGLAB (1-888-478-4522) (toll free in USA), or 1(312) 455-8498 (outside USA)

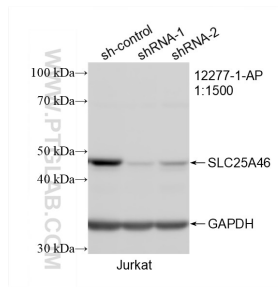
E: proteintech@ptglab.com
W: ptglab.com

This product is exclusively available under Proteintech Group brand and is not available to purchase from any other manufacturer.

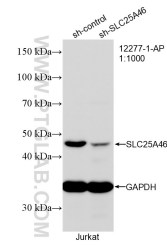
Selected Validation Data



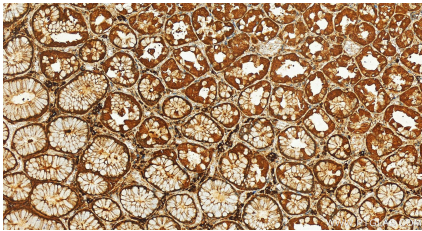
Various lysates were subjected to SDS PAGE followed by western blot with 12277-1-AP (SLC25A46 antibody) at dilution of 1:2000 incubated at room temperature for 1.5 hours. This data was developed using the same antibody clone with 12277-1-PBS in a different storage buffer formulation.



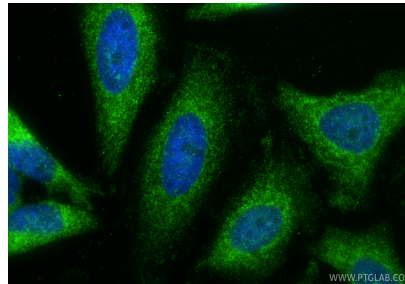
WB result of SLC25A46 antibody (12277-1-AP; 1:1500; incubated at room temperature for 1.5 hours) with sh-Control and sh-SLC25A46 transfected Jurkat cells. This data was developed using the same antibody clone with 12277-1-PBS in a different storage buffer formulation.



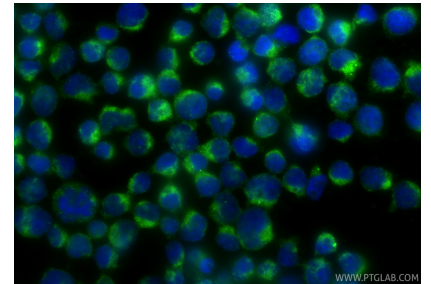
WB result of SLC25A46 antibody (12277-1-AP; 1:1000; incubated at room temperature for 1.5 hours) with sh-Control and sh-SLC25A46 transfected Jurkat cells. This data was developed using the same antibody clone with 12277-1-PBS in a different storage buffer formulation.



Immunohistochemical analysis of paraffin-embedded human stomach tissue slide using 12277-1-AP (SLC25A46 antibody) at dilution of 1:200 (under 20x lens). Heat mediated antigen retrieval with Tris-EDTA buffer (pH 9.0). This data was developed using the same antibody clone with 12277-1-PBS in a different storage buffer formulation.



Immunofluorescent analysis of (4% PFA) fixed HeLa cells using SLC25A46 antibody (12277-1-AP) at dilution of 1:400 and CoraLite®488-Conjugated Goat Anti-Rabbit IgG(H+L) (SA00013-2). This data was developed using the same antibody clone with 12277-1-PBS in a different storage buffer formulation.



Immunofluorescent analysis of (4% PFA) fixed Jurkat cells using SLC25A46 antibody (12277-1-AP) at dilution of 1:400 and CoraLite®488-Conjugated Goat Anti-Rabbit IgG(H+L) (SA00013-2). This data was developed using the same antibody clone with 12277-1-PBS in a different storage buffer formulation.