

For Research Use Only

PLAC8 Polyclonal antibody

Catalog Number: 12284-1-AP

Featured Product

9 Publications



Basic Information

Catalog Number:

12284-1-AP

Size:

150ul, Concentration: 700 ug/ml by Nanodrop;

Source:

Rabbit

Isotype:

IgG

Immunogen Catalog Number:

AG2939

GenBank Accession Number:

BC012205

GeneID (NCBI):

51316

UNIPROT ID:

Q9NZF1

Full Name:

placenta-specific 8

Calculated MW:

12 kDa

Observed MW:

12 kDa

Purification Method:

Antigen affinity purification

Recommended Dilutions:

WB 1:200-1:1000

IHC 1:50-1:500

Applications

Tested Applications:

WB, IHC, ELISA

Cited Applications:

WB, IHC, IF

Species Specificity:

human

Cited Species:

human

Note-IHC: suggested antigen retrieval with TE buffer pH 9.0; (*) Alternatively, antigen retrieval may be performed with citrate buffer pH 6.0

Positive Controls:

WB : human peripheral blood leukocyte, PANC-1 cells

IHC : human placenta tissue, human brain tissue, human tonsillitis tissue

Background Information

PLAC8, also named as Protein C15, is a placenta-specific protein. The expression was downregulated upon activation, particularly in dendritic cells generated in vitro from CD34 (142230) progenitor cells. The MW of PLAC8 is about 12-20kd.

Notable Publications

Author	Pubmed ID	Journal	Application
Boya Deng	36602585	Histochem Cell Biol	WB,IHC
Jianfeng Gan	34975294	Int J Med Sci	IHC
Xuan Feng	33570788	FASEB J	IHC

Storage

Storage:

Store at -20°C. Stable for one year after shipment.

Storage Buffer:

PBS with 0.02% sodium azide and 50% glycerol, pH7.3

Aliquoting is unnecessary for -20°C storage

*** 20ul sizes contain 0.1% BSA

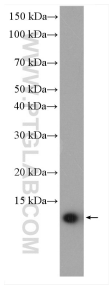
For technical support and original validation data for this product please contact:

T: 1 (888) 4PTGLAB (1-888-478-4522) (toll free in USA), or 1(312) 455-8498 (outside USA)

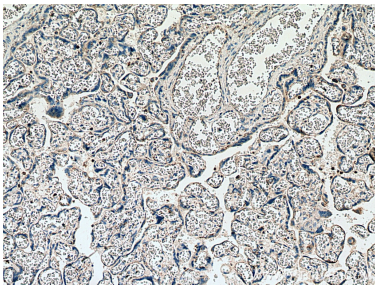
E: proteintech@ptglab.com
W: ptglab.com

This product is exclusively available under Proteintech Group brand and is not available to purchase from any other manufacturer.

Selected Validation Data



human peripheral blood leukocyte were subjected to SDS PAGE followed by western blot with 12284-1-AP (PLAC8 antibody) at dilution of 1:300 incubated at room temperature for 1.5 hours.



Immunohistochemical analysis of paraffin-embedded human placenta tissue slide using 12284-1-AP (PLAC8 antibody) at dilution of 1:200 (under 10x lens). Heat mediated antigen retrieval with Tris-EDTA buffer (pH 9.0).



Various lysates were subjected to SDS PAGE followed by western blot with 12284-1-AP (PLAC8 antibody) at dilution of 1:1000 incubated at room temperature for 1.5 hours.