

For Research Use Only

# PLXDC2 Polyclonal antibody, PBS Only

Catalog Number:12285-1-PBS



## Basic Information

**Catalog Number:**

12285-1-PBS

**Size:**

100ug , Concentration: 1 mg/ml by Nanodrop;

**Source:**

Rabbit

**Isotype:**

IgG

**Immunogen Catalog Number:**

AG2940

**GenBank Accession Number:**

BC012885

**GeneID (NCBI):**

84898

**UNIPROT ID:**

Q6UX71

**Full Name:**

plexin domain containing 2

**Calculated MW:**

480 aa, 54 kDa

**Observed MW:**

60 kDa

**Purification Method:**

Antigen affinity purification

## Applications

**Tested Applications:**

WB, IHC, Indirect ELISA

**Species Specificity:**

human, mouse, rat

## Background Information

PLXDC2 (Plexin-domain containing 2), also named tumor endothelial marker 7-related protein (TEM7R), is a single-pass type I membrane protein with some homology to nidogen and to plexins. PLXDC2 is located in tumor endothelium and plays a role in tumor angiogenesis. Three isoforms of PLXDC2 produced by alternative splicing have been described. Recent finding revealed that PLXDC2 is a mitogen for neural progenitors and functions as a novel regulator of the development of different brain regions, suggesting its role in coordinating proliferation and differentiation in the developing nervous system.

## Storage

**Storage:**

Store at -80°C.

**Storage Buffer:**

PBS Only

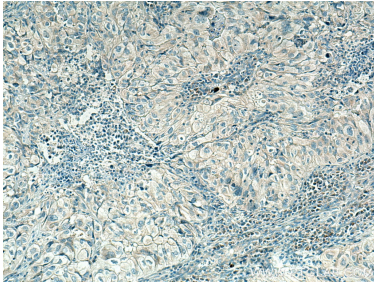
For technical support and original validation data for this product please contact:

T: 1 (888) 4PTGLAB (1-888-478-4522) (toll free in USA), or 1(312) 455-8498 (outside USA)

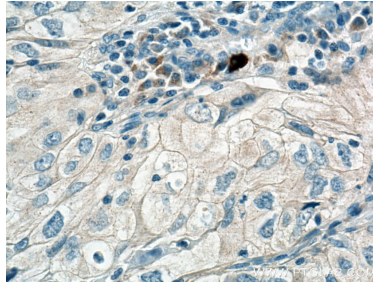
E: [proteintech@ptglab.com](mailto:proteintech@ptglab.com)  
W: [ptglab.com](http://ptglab.com)

**This product is exclusively available under Proteintech Group brand and is not available to purchase from any other manufacturer.**

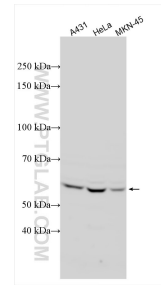
## Selected Validation Data



Immunohistochemical analysis of paraffin-embedded human lung cancer tissue slide using 12285-1-AP (PLXDC2 antibody) at dilution of 1:200 (under 10x lens). Heat mediated antigen retrieval with Tris-EDTA buffer (pH 9.0). This data was developed using the same antibody clone with 12285-1-PBS in a different storage buffer formulation.



Immunohistochemical analysis of paraffin-embedded human lung cancer tissue slide using 12285-1-AP (PLXDC2 antibody) at dilution of 1:200 (under 40x lens). Heat mediated antigen retrieval with Tris-EDTA buffer (pH 9.0). This data was developed using the same antibody clone with 12285-1-PBS in a different storage buffer formulation.



Various lysates were subjected to SDS PAGE followed by western blot with 12285-1-AP (PLXDC2 antibody) at dilution of 1:1000 incubated at room temperature for 1.5 hours. This data was developed using the same antibody clone with 12285-1-PBS in a different storage buffer formulation.