

For Research Use Only

CIDEC Polyclonal antibody

Catalog Number: 12287-1-AP

7 Publications



Basic Information

Catalog Number:

12287-1-AP

Size:

150ul, Concentration: 550 ug/ml by Nanodrop and 313 ug/ml by Bradford method using BSA as the standard;

Source:

Rabbit

Isotype:

IgG

Immunogen Catalog Number:

AG2913

GenBank Accession Number:

BC016851

GeneID (NCBI):

63924

UNIPROT ID:

Q96AQ7

Full Name:

cell death-inducing DFFA-like effector c

Calculated MW:

238 aa, 27 kDa

Observed MW:

27-35 kDa

Purification Method:

Antigen affinity purification

Recommended Dilutions:

WB 1:500-1:2000

Applications

Tested Applications:

WB, ELISA

Cited Applications:

WB, IF

Species Specificity:

human

Cited Species:

human, mouse

Positive Controls:

WB: MCF-7 cells, L02 cells

Background Information

Cell death-inducing DFF45-like effector (CIDE) proteins, including CIDEA, CIDEB and CIDEC (also called Fsp27 in rodents), are predominantly expressed in brown adipose tissues (BAT), liver and WAT. CIDEC was found to be highly expressed in adipose tissues and to function as a lipid droplet-binding protein that promotes lipid accumulation in adipocytes. While normal mouse livers express low levels of CIDEC protein, its expression is highly upregulated in NALFD, but not in chronic ethanol feeding-induced fatty liver. (PMID: 26099526) Catalog#12287-1-AP recognizing CIDEC (calculated 28 kDa) as a 30 kDa and 45-50 kDa due to its posttranslational modification (PMID: 19258494).

Notable Publications

Author	Pubmed ID	Journal	Application
Yi Jin	35388144	Commun Biol	WB
Ranran Zhang	39563624	J Agric Food Chem	WB,IF
Xinxing Wan	38467615	Cell Death Discov	WB

Storage

Storage:

Store at -20°C. Stable for one year after shipment.

Storage Buffer:

PBS with 0.02% sodium azide and 50% glycerol pH 7.3.

Aliquoting is unnecessary for -20°C storage

*** 20ul sizes contain 0.1% BSA

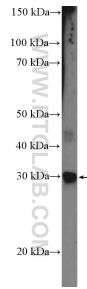
For technical support and original validation data for this product please contact:

T: 1 (888) 4PTGLAB (1-888-478-4522) (toll free in USA), or 1(312) 455-8498 (outside USA)

E: proteintech@ptglab.com
W: ptglab.com

This product is exclusively available under Proteintech Group brand and is not available to purchase from any other manufacturer.

Selected Validation Data



MCF-7 cells were subjected to SDS PAGE followed by western blot with 12287-1-AP (CIDEA Antibody) at dilution of 1:1000 incubated at room temperature for 1.5 hours.