

For Research Use Only

SFXN1 Polyclonal antibody, PBS Only

Catalog Number: 12296-1-PBS

Featured Product



Basic Information

Catalog Number:

12296-1-PBS

Size:

100ug, Concentration: 1 mg/ml by Nanodrop;

Source:

Rabbit

Isotype:

IgG

Immunogen Catalog Number:

AG2985

GenBank Accession Number:

BC020517

GeneID (NCBI):

94081

UNIPROT ID:

Q9H9B4

Full Name:

sideroflexin 1

Calculated MW:

35.6 kDa

Observed MW:

30-35 kDa

Purification Method:

Antigen affinity purification

Applications

Tested Applications:

WB, IHC, IP, Indirect ELISA

Species Specificity:

human, mouse, rat

Background Information

SFXN1, the founding member of the SLC56 family, was identified by positional cloning of the mutation in the flexed-tail mouse model with sideroblastic anemia. SFXN1 was recently identified as a mitochondrial serine transporter essential for one-carbon (1C) metabolism, a process in which folate species are generated and used in biosynthetic pathways required for cell proliferation. In HEK293 cells, SFXN1 is the most abundant isoform among the SFXNs.

Storage

Storage:

Store at -80°C.

Storage Buffer:

PBS only, pH7.3

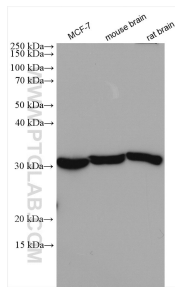
For technical support and original validation data for this product please contact:

T: 1 (888) 4PTGLAB (1-888-478-4522) (toll free in USA), or 1(312) 455-8498 (outside USA)

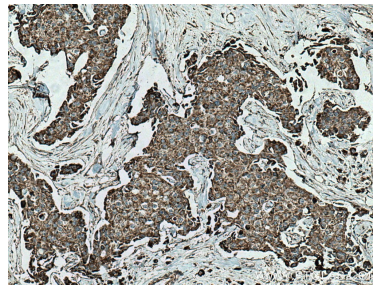
E: proteintech@ptglab.com
W: ptglab.com

This product is exclusively available under Proteintech Group brand and is not available to purchase from any other manufacturer.

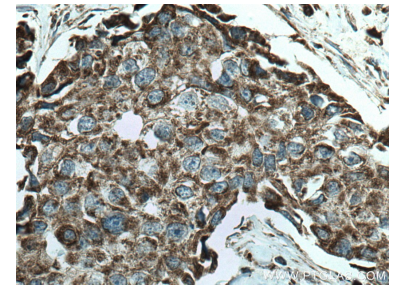
Selected Validation Data



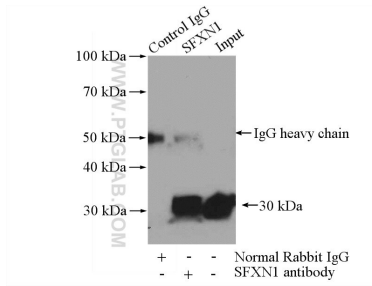
Various lysates were subjected to SDS PAGE followed by western blot with 12296-1-AP (SF2XN1 antibody) at dilution of 1:3000 incubated at room temperature for 1.5 hours. This data was developed using the same antibody clone with 12296-1-PBS in a different storage buffer formulation.



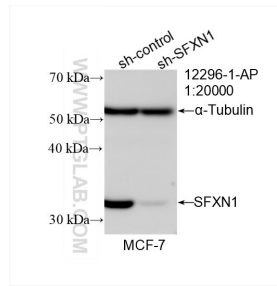
Immunohistochemical analysis of paraffin-embedded human breast cancer tissue slide using 12296-1-AP (SF2XN1 antibody) at dilution of 1:200 (under 10x lens). Heat mediated antigen retrieval with Tris-EDTA buffer (pH 9.0). This data was developed using the same antibody clone with 12296-1-PBS in a different storage buffer formulation.



Immunohistochemical analysis of paraffin-embedded human breast cancer tissue slide using 12296-1-AP (SF2XN1 antibody) at dilution of 1:200 (under 40x lens). Heat mediated antigen retrieval with Tris-EDTA buffer (pH 9.0). This data was developed using the same antibody clone with 12296-1-PBS in a different storage buffer formulation.



IP result of anti-SF2XN1 (IP:12296-1-AP, 4ug; Detection:12296-1-AP 1:800) with mouse brain tissue lysate 4000ug. This data was developed using the same antibody clone with 12296-1-PBS in a different storage buffer formulation.



WB result of SF2XN1 antibody (12296-1-AP; 1:20000; incubated at room temperature for 1.5 hours) with sh-Control and sh-SF2XN1 transfected MCF-7 cells. This data was developed using the same antibody clone with 12296-1-PBS in a different storage buffer formulation.