

For Research Use Only

# ITGB1BP1 Polyclonal antibody

Catalog Number: 12300-1-AP



## Basic Information

|  |  |  |
|--|--|--|
| <b>Catalog Number:</b><br>12300-1-AP   | <b>GenBank Accession Number:</b><br>BC012264           | <b>Purification Method:</b><br>Antigen affinity purification                                     |
| <b>Size:</b><br>150ul , Concentration: 700 µg/ml by Nanodrop and 333 µg/ml by Bradford method using BSA as the standard; | <b>GeneID (NCBI):</b><br>9270                          | <b>Recommended Dilutions:</b><br>WB 1:200-1:1000<br>IP 0.5-4.0 ug for IP and 1:200-1:1000 for WB |
| <b>Source:</b><br>Rabbit   | <b>Full Name:</b><br>integrin beta 1 binding protein 1 | <b>IHC 1:20-1:200</b><br><b>IF 1:10-1:100</b>  |
| <b>Isotype:</b><br>IgG   | <b>Calculated MW:</b><br>200 aa, 22 kDa                |  |
| <b>Immunogen Catalog Number:</b><br>AG2945   | <b>Observed MW:</b><br>22 kDa                          |  |

## Applications

### Tested Applications:

IF, IHC, IP, WB, ELISA

### Species Specificity:

human, mouse, rat

**Note-IHC: suggested antigen retrieval with TE buffer pH 9.0; (\*) Alternatively, antigen retrieval may be performed with citrate buffer pH 6.0**

### Positive Controls:

**WB:** PC-3 cells, mouse thymus tissue, human brain tissue

**IP:** mouse thymus tissue,

**IHC:** human heart tissue, human colon tissue

**IF:** PC-3 cells,

## Background Information

ITGB1BP1, also named as ICAP1, is a key regulator of the integrin-mediated cell-matrix interaction signaling by binding to the ITGB1 cytoplasmic tail. It plays a role in cell proliferation, differentiation, spreading, adhesion and migration in the context of mineralization and bone development and angiogenesis. ITGB1BP1 promotes transcriptional activity of the MYC promoter.

## Storage

### Storage:

Store at -20°C. Stable for one year after shipment.

### Storage Buffer:

PBS with 0.02% sodium azide and 50% glycerol pH 7.3.

Aliquoting is unnecessary for -20°C storage

**\*\*\* 20ul sizes contain 0.1% BSA**

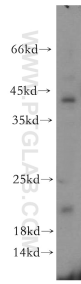
For technical support and original validation data for this product please contact:

T: 1 (888) 4PTGLAB (1-888-478-4522) (toll free in USA), or 1(312) 455-8498 (outside USA)

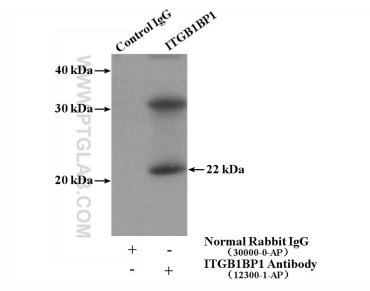
E: [proteintech@ptglab.com](mailto:proteintech@ptglab.com)  
W: [ptglab.com](http://ptglab.com)

**This product is exclusively available under Proteintech Group brand and is not available to purchase from any other manufacturer.**

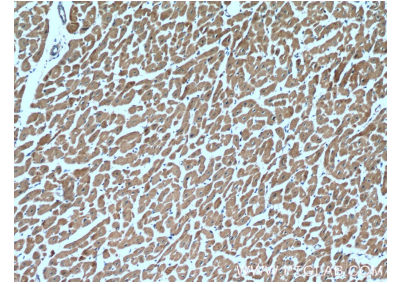
## Selected Validation Data



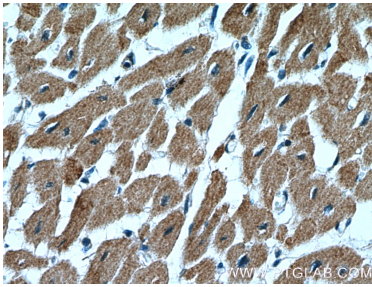
PC-3 cells were subjected to SDS PAGE followed by western blot with 12300-1-AP (ITGB1BP1 antibody) at dilution of 1:300 incubated at room temperature for 1.5 hours.



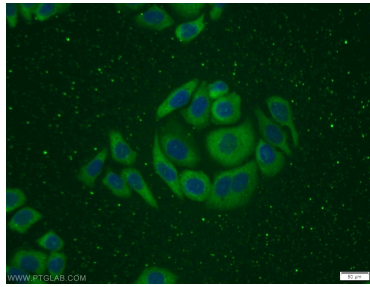
IP Result of anti-ITGB1BP1 (IP:12300-1-AP, 4ug; Detection:12300-1-AP 1:300) with mouse thymus tissue lysate 2800ug.



Immunohistochemical analysis of paraffin-embedded human heart tissue slide using 12300-1-AP (ITGB1BP1 Antibody) at dilution of 1:200 (under 10x lens).



Immunohistochemical analysis of paraffin-embedded human heart tissue slide using 12300-1-AP (ITGB1BP1 Antibody) at dilution of 1:200 (under 40x lens).



Immunofluorescent analysis of PC-3 cells using 12300-1-AP (ITGB1BP1 antibody) at dilution of 1:25 and Alexa Fluor 488-conjugated AffiniPure Goat Anti-Rabbit IgG(H+L).