

For Research Use Only

PDCD6/ALG2 Polyclonal antibody

Catalog Number:12303-1-AP

Featured Product

22 Publications



Basic Information

Catalog Number:

12303-1-AP

Size:

150ul , Concentration: 700 ug/ml by Nanodrop;

Source:

Rabbit

Isotype:

IgG

Immunogen Catalog Number:

AG2949

GenBank Accession Number:

BC012384

GeneID (NCBI):

10016

UNIPROT ID:

O75340

Full Name:

programmed cell death 6

Calculated MW:

191 aa, 22 kDa

Observed MW:

15-22 kDa

Purification Method:

Antigen affinity purification

Recommended Dilutions:

WB 1:1000-1:8000

IP 0.5-4.0 ug for 1.0-3.0 mg of total protein lysate

IHC 1:50-1:500

Applications

Tested Applications:

WB, IHC, IP, ELISA

Cited Applications:

WB, IHC, IF, IP

Species Specificity:

human, mouse, rat

Cited Species:

human, mouse, rat

Positive Controls:

WB : HEK-293 cells, Jurkat cells, HeLa cells, HepG2 cells, K-562 cells, NIH/3T3 cells, mouse liver tissue, rat liver tissue

IP : HeLa cells,

IHC : human lung cancer tissue, human liver cancer tissue, human stomach tissue

Note-IHC: suggested antigen retrieval with **TE buffer pH 9.0;** (*) Alternatively, antigen retrieval may be performed with **citrate buffer pH 6.0**

Notable Publications

Author	Pubmed ID	Journal	Application
Elisa Teyssou	33218681	Neurobiol Aging	WB
Colleen A McGourty	27716508	Cell	WB,IF
Gabriele Loers	35024572	FASEB Bioadv	WB,IF,IP

Storage

Storage:

Store at -20°C. Stable for one year after shipment.

Storage Buffer:

PBS with 0.02% sodium azide and 50% glycerol pH 7.3.

Aliquoting is unnecessary for -20°C storage

*** 20ul sizes contain 0.1% BSA

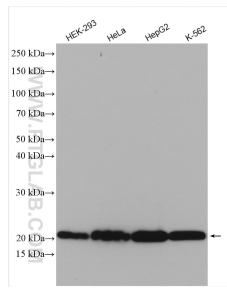
For technical support and original validation data for this product please contact:

T: 1 (888) 4PTGLAB (1-888-478-4522) (toll free in USA), or 1(312) 455-8498 (outside USA)

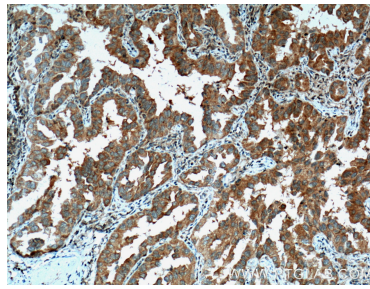
E: proteintech@ptglab.com
W: ptglab.com

This product is exclusively available under Proteintech Group brand and is not available to purchase from any other manufacturer.

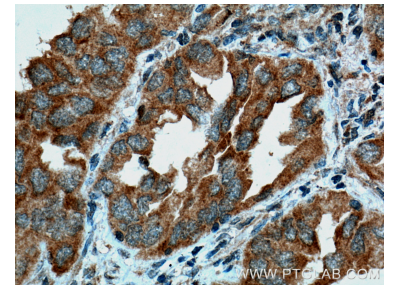
Selected Validation Data



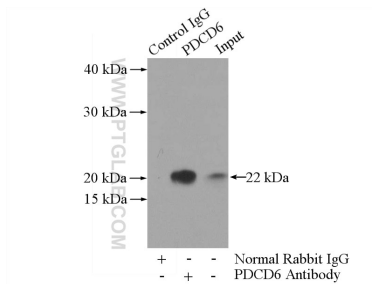
Various lysates were subjected to SDS PAGE followed by western blot with 12303-1-AP (PDCD6 antibody) at dilution of 1:4000 incubated at room temperature for 1.5 hours.



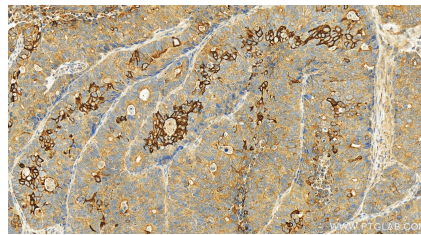
Immunohistochemical analysis of paraffin-embedded human lung cancer tissue slide using 12303-1-AP (PDCD6 Antibody) at dilution of 1:200 (under 10x lens). Heat mediated antigen retrieval with Tris-EDTA buffer (pH 9.0).



Immunohistochemical analysis of paraffin-embedded human lung cancer tissue slide using 12303-1-AP (PDCD6 Antibody) at dilution of 1:200 (under 40x lens). Heat mediated antigen retrieval with Tris-EDTA buffer (pH 9.0).



IP result of anti-PDCD6 (IP:12303-1-AP, 3ug; Detection:12303-1-AP 1:500) with HeLa cells lysate 3200ug.



Immunohistochemical analysis of paraffin-embedded normal stomach slide using 12303-1-AP (PDCD6 antibody) at dilution of 1:200 (under 20x lens). Heat mediated antigen retrieval with Tris-EDTA buffer (pH 9.0).