

For Research Use Only

APLP1 Polyclonal antibody, PBS Only

Catalog Number:12305-2-PBS



Basic Information

| | | |
|--|---|--|
| Catalog Number: 12305-2-PBS | GenBank Accession Number: BC012889 | Purification Method: Antigen affinity purification |
| Size: 100ug, Concentration: 1 mg/ml by Nanodrop; | GeneID (NCBI): 333 | |
| Source: Rabbit | UNIPROT ID: P51693 | |
| Isotype: IgG | Full Name: amyloid beta (A4) precursor-like protein 1 | |
| Immunogen Catalog Number: AG2951 | Calculated MW: 650 aa, 72 kDa | |
| | Observed MW: 72 kDa | |

Applications

Tested Applications:
WB, IHC, IP, Indirect ELISA

Species Specificity:
human, mouse, rat

Background Information

APLP1 (Amyloid Precursor-Like Protein 1) is a member of the amyloid precursor protein (APP) family, which also includes APP and APLP2. It is a type I transmembrane glycoprotein that is highly and predominantly expressed in the central nervous system, especially at the postsynaptic density of neurons. Functionally, APLP1 plays important roles in synaptic adhesion, synaptogenesis, and neurite outgrowth. It can form homophilic trans-interactions between neighboring cells, contributing to cell-cell adhesion and the formation of synaptic structures. Its proteolytic processing by α -, β -, and γ -secretases releases intracellular fragments that may participate in transcriptional regulation and signal transduction, potentially influencing gene expression and neuronal survival.

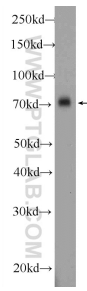
Storage

Storage:
Store at -80°C.
Storage Buffer:
PBS only, pH7.3

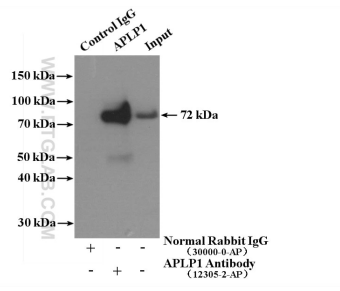
For technical support and original validation data for this product please contact:
T: 1 (888) 4PTGLAB (1-888-478-4522) (toll free in USA), or 1(312) 455-8498 (outside USA) E: proteintech@ptglab.com
W: ptglab.com

This product is exclusively available under Proteintech Group brand and is not available to purchase from any other manufacturer.

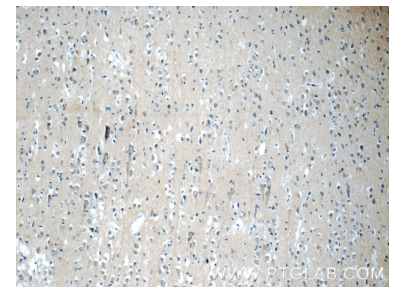
Selected Validation Data



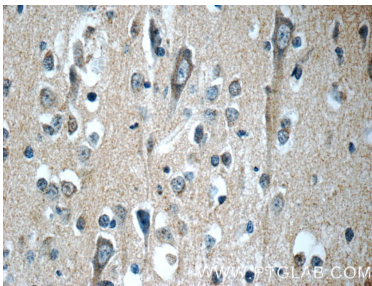
mouse brain tissue were subjected to SDS PAGE followed by western blot with 12305-2-AP (APLP1 Antibody) at dilution of 1:1000 incubated at room temperature for 1.5 hours. This data was developed using the same antibody clone with 12305-2-PBS in a different storage buffer formulation.



IP result of anti-APLP1 (IP:12305-2-AP, 4ug; Detection:12305-2-AP 1:600) with mouse brain tissue lysate 3160 ug. This data was developed using the same antibody clone with 12305-2-PBS in a different storage buffer formulation.



Immunohistochemical analysis of paraffin-embedded human brain tissue slide using 12305-2-AP (APLP1 Antibody) at dilution of 1:50 (under 10x lens). This data was developed using the same antibody clone with 12305-2-PBS in a different storage buffer formulation.



Immunohistochemical analysis of paraffin-embedded human brain tissue slide using 12305-2-AP (APLP1 Antibody) at dilution of 1:50 (under 40x lens). This data was developed using the same antibody clone with 12305-2-PBS in a different storage buffer formulation.