

For Research Use Only

GEMIN6 Polyclonal antibody

Catalog Number: 12307-2-AP **2 Publications**



Basic Information

Catalog Number: 12307-2-AP	GenBank Accession Number: BC018195	Purification Method: Antigen affinity purification
Size: 150ul, Concentration: 750 µg/ml by Nanodrop and 333 µg/ml by Bradford method using BSA as the standard;	GeneID (NCBI): 79833	Recommended Dilutions: WB 1:200-1:1000 IHC 1:50-1:500 IF 1:50-1:500
Source: Rabbit	Full Name: gem (nuclear organelle) associated protein 6	
Isotype: IgG	Calculated MW: 167 aa, 19 kDa	
Immunogen Catalog Number: AG2954	Observed MW: 19 kDa	

Applications

Tested Applications: IF, IHC, WB, ELISA	Positive Controls: WB : HEK-293 cells, HeLa cells
Cited Applications: WB	IHC : human breast cancer tissue,
Species Specificity: human	IF : PC-3 cells,
Cited Species: human	

Note-IHC: suggested antigen retrieval with TE buffer pH 9.0; (*) Alternatively, antigen retrieval may be performed with citrate buffer pH 6.0

Background Information

GEMIN6, also named as SIP2, is a subunit of SMN complex. It plays an important role in the splicing of cellular pre-mRNAs.

Notable Publications

Author	Pubmed ID	Journal	Application
Anne-Sophie Gribling-Burrer	28115638	Nucleic Acids Res	WB
Jonathan Bizarro	26275778	Nucleic Acids Res	WB

Storage

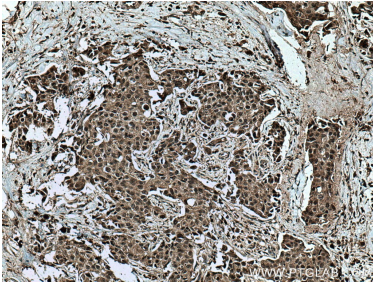
Storage:
Store at -20°C. Stable for one year after shipment.
Storage Buffer:
PBS with 0.02% sodium azide and 50% glycerol pH 7.3.
Aliquoting is unnecessary for -20°C storage

***** 20ul sizes contain 0.1% BSA**

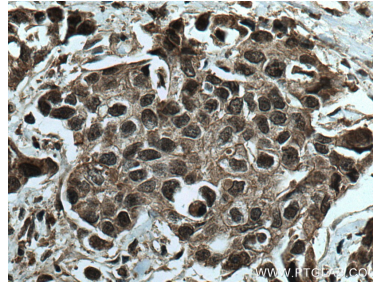
For technical support and original validation data for this product please contact:
T: 1 (888) 4PTGLAB (1-888-478-4522) (toll free in USA), or 1(312) 455-8498 (outside USA)
E: proteintech@ptglab.com
W: ptglab.com

This product is exclusively available under Proteintech Group brand and is not available to purchase from any other manufacturer.

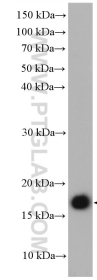
Selected Validation Data



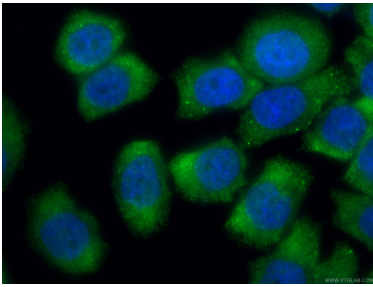
Immunohistochemical analysis of paraffin-embedded human breast cancer tissue slide using 12307-2-AP (GEMIN6 antibody) at dilution of 1:200 (under 10x lens). Heat mediated antigen retrieval with Tris-EDTA buffer (pH 9.0).



Immunohistochemical analysis of paraffin-embedded human breast cancer tissue slide using 12307-2-AP (GEMIN6 antibody) at dilution of 1:200 (under 40x lens). Heat mediated antigen retrieval with Tris-EDTA buffer (pH 9.0).



HEK-293 cells were subjected to SDS PAGE followed by western blot with 12307-2-AP (GEMIN6 antibody) at dilution of 1:300 incubated at room temperature for 1.5 hours.



Immunofluorescent analysis of (4% PFA) fixed PC-3 cells using 12307-2-AP (GEMIN6 antibody) at dilution of 1:100 and CoraLite488-Conjugated AffiniPure Goat Anti-Rabbit IgG(H+L).