

For Research Use Only

# IL-27RA Polyclonal antibody, PBS Only

Catalog Number: 12308-1-PBS



## Basic Information

**Catalog Number:**

12308-1-PBS

**Size:**

100ug, Concentration: 1 mg/ml by Nanodrop;

**Source:**

Rabbit

**Isotype:**

IgG

**Immunogen Catalog Number:**

AG2956

**GenBank Accession Number:**

BC028003

**GeneID (NCBI):**

9466

**UNIPROT ID:**

Q6UWB1

**Full Name:**

interleukin 27 receptor, alpha

**Calculated MW:**

636 aa, 69 kDa

**Observed MW:**

70 kDa

**Purification Method:**

Antigen affinity purification

## Applications

**Tested Applications:**

WB, IF/ICC, Indirect ELISA

**Species Specificity:**

human

## Background Information

IL-27RA, also known as T-cell cytokine receptor WSX-1 or TCCR, is a unique receptor subunit for the cytokine IL-27. It is expressed in a variety of cells including activated T cells, NK cells, mast cells, endothelial cells, activated B cells, monocytes, Langerhans cells, and activated dendritic cells (PMID: 18378322). The interaction with IL-27 leads to the phosphorylation of Jak and STAT proteins, which are crucial for the regulation of immune responses (PMID: 28536468). IL-27RA plays a significant role in immune cell activation and differentiation, particularly in the context of Th1 and Th17 cells (PMID: 38566992).

## Storage

**Storage:**

Store at -80°C.

**Storage Buffer:**

PBS only, pH7.3

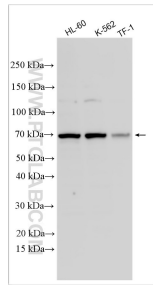
For technical support and original validation data for this product please contact:

T: 1 (888) 4PTGLAB (1-888-478-4522) (toll free in USA), or 1(312) 455-8498 (outside USA)

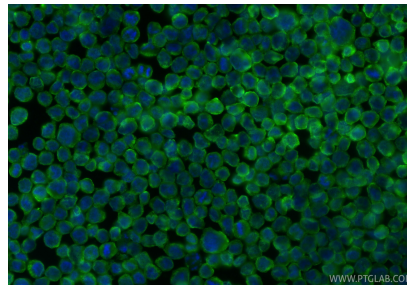
E: [proteintech@ptglab.com](mailto:proteintech@ptglab.com)  
W: [ptglab.com](http://ptglab.com)

**This product is exclusively available under Proteintech Group brand and is not available to purchase from any other manufacturer.**

## Selected Validation Data



Various lysates were subjected to SDS PAGE followed by western blot with 12308-1-AP (IL-27RA antibody) at dilution of 1:2000 incubated at room temperature for 1.5 hours. This data was developed using the same antibody clone with 12308-1-PBS in a different storage buffer formulation.



Immunofluorescent analysis of (4% PFA) fixed HL-60 cells using IL-27RA antibody (12308-1-AP) at dilution of 1:400 and CoraLite®488-Conjugated Goat Anti-Rabbit IgG(H+L) (SA00013-2). This data was developed using the same antibody clone with 12308-1-PBS in a different storage buffer formulation.