

For Research Use Only

# GNPDA1 Polyclonal antibody

Catalog Number: 12312-1-AP

Featured Product

3 Publications



## Basic Information

<b>Catalog Number:</b> 12312-1-AP	<b>GenBank Accession Number:</b> BC012853	<b>Purification Method:</b> Antigen affinity purification
<b>Size:</b> 150ul , Concentration: 650 µg/ml by Nanodrop and 333 µg/ml by Bradford method using BSA as the standard;	<b>GeneID (NCBI):</b> 10007	<b>Recommended Dilutions:</b> WB 1:500-1:2000 IHC 1:20-1:200
<b>Source:</b> Rabbit	<b>Full Name:</b> glucosamine-6-phosphate deaminase 1	
<b>Isotype:</b> IgG	<b>Calculated MW:</b> 289 aa, 33 kDa	
<b>Immunogen Catalog Number:</b> AG2961	<b>Observed MW:</b> 33 kDa	

## Applications

<b>Tested Applications:</b> IHC, WB, ELISA	<b>Positive Controls:</b>
<b>Cited Applications:</b> IHC, WB	<b>WB :</b> K-562 cells, HeLa cells, human brain tissue, rat kidney tissue
<b>Species Specificity:</b> human, mouse, rat	<b>IHC :</b> human pancreas cancer tissue,
<b>Cited Species:</b> human	

**Note-IHC: suggested antigen retrieval with TE buffer pH 9.0; (\*) Alternatively, antigen retrieval may be performed with citrate buffer pH 6.0**

## Background Information

GNPDA1 (glucosamine-6-phosphate isomerase 1) is also named as GNPI, HLN, KIAA0060 and belongs to the glucosamine/galactosamine-6-phosphate isomerase family. It catalyzes the reversible conversion of D-glucosamine-6-phosphate (GlcN6P) into D-fructose-6-phosphate (Fru6P) and ammonium (PMID:12965206). It may be playing an essential role for egg activation and early embryo development. GNPI is expressed as a 33-kD cytosolic protein in various cell lines (PMID: 9714720).

## Notable Publications

Author	Pubmed ID	Journal	Application
Yajuan Zhao	34557495	Front Cell Dev Biol	IHC
Dezhi Li	32606980	Cancer Manag Res	WB
Sanna Oikari	26887390	Glycobiology	WB

## Storage

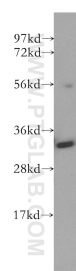
**Storage:**  
Store at -20°C. Stable for one year after shipment.  
**Storage Buffer:**  
PBS with 0.02% sodium azide and 50% glycerol pH 7.3.  
Aliquoting is unnecessary for -20°C storage

\*\*\* 20ul sizes contain 0.1% BSA

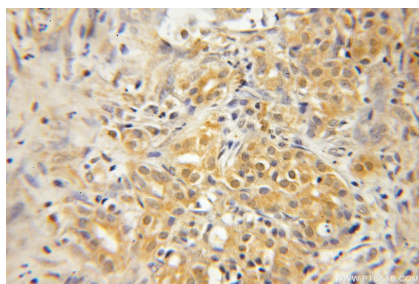
For technical support and original validation data for this product please contact:  
T: 1 (888) 4PTGLAB (1-888-478-4522) (toll free in USA), or 1(312) 455-8498 (outside USA)  
E: [proteintech@ptglab.com](mailto:proteintech@ptglab.com)  
W: [ptglab.com](http://ptglab.com)

This product is exclusively available under Proteintech Group brand and is not available to purchase from any other manufacturer.

## Selected Validation Data



K-562 cells were subjected to SDS PAGE followed by western blot with 12312-1-AP (GNPDA1 antibody) at dilution of 1:400 incubated at room temperature for 1.5 hours.



Immunohistochemical analysis of paraffin-embedded human pancreas cancer using 12312-1-AP (GNPDA1 antibody) at dilution of 1:50 (under 10x lens).