

For Research Use Only

KIN17 Polyclonal antibody

Catalog Number: 12313-1-AP



Basic Information

Catalog Number: 12313-1-AP	GenBank Accession Number: BC017309	Purification Method: Antigen affinity purification
Size: 150ul , Concentration: 400 µg/ml by Nanodrop and 300 µg/ml by Bradford method using BSA as the standard;	GeneID (NCBI): 22944	Recommended Dilutions: WB 1:1000-1:4000 IP 0.5-4.0 ug for IP and 1:250-1:1000 for WB
Source: Rabbit	Full Name: KIN, antigenic determinant of recA protein homolog (mouse)	IF 1:50-1:500
Isotype: IgG	Calculated MW: 393 aa, 45 kDa	
Immunogen Catalog Number: AG2963	Observed MW: 40 kDa	

Applications

Tested Applications: IF, IP, WB, ELISA	Positive Controls:
Species Specificity: human, mouse, rat	WB : HeLa cells, human heart tissue
	IP : mouse brain tissue,
	IF : HeLa cells,

Background Information

KIN17 (also known as KIN) is an evolutionarily conserved zinc finger nuclear protein. It consists of three motifs, a zinc finger, a nuclear localization signal and a Kyprides-Onzonis-Woese motif that mediates transcription elongation. KIN17 is ubiquitously expressed in human tissues and participates in DNA replication, DNA repair and cell cycle progression. Emerging evidence has indicated the importance of KIN17 in the pathogenesis and progression of tumors (PMID: 28454391). KIN17 has a calculated molecular weight of 45 kDa, this antibody is raised against human KIN17 and detects a band of about 40 kDa.

Storage

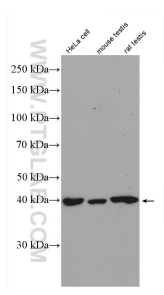
Storage:
Store at -20°C. Stable for one year after shipment.
Storage Buffer:
PBS with 0.02% sodium azide and 50% glycerol pH 7.3.
Aliquoting is unnecessary for -20°C storage

*** 20ul sizes contain 0.1% BSA

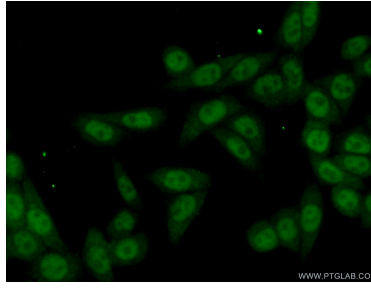
For technical support and original validation data for this product please contact:
T: 1 (888) 4PTGLAB (1-888-478-4522) (toll free in USA), or 1(312) 455-8498 (outside USA)
E: proteintech@ptglab.com
W: ptglab.com

This product is exclusively available under Proteintech Group brand and is not available to purchase from any other manufacturer.

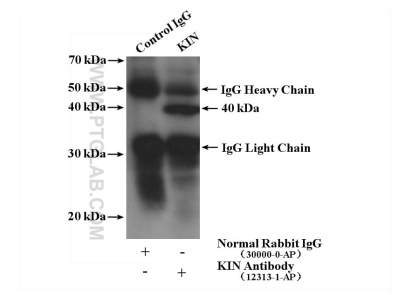
Selected Validation Data



HeLa cells, mouse testis tissue, and rat testis tissue were subjected to SDS PAGE followed by western blot with 12313-1-AP (KIN17 antibody) at dilution of 1:2000 incubated at room temperature for 1.5 hours.



Immunofluorescent analysis of (4% PFA) fixed HeLa cells using 12313-1-AP (KIN17 antibody) at dilution of 1:50 and Alexa Fluor 488-conjugated AffiniPure Goat Anti-Rabbit IgG(H+L).



IP result of anti-KIN17 (IP:12313-1-AP, 4ug; Detection:12313-1-AP 1:500) with mouse brain tissue lysate 3160 ug.