

For Research Use Only

# CRB3 Polyclonal antibody

Catalog Number: 12315-1-AP



## Basic Information

**Catalog Number:**

12315-1-AP

**Size:**

150ul , Concentration: 450 ug/ml by Nanodrop and 200 ug/ml by Bradford method using BSA as the standard;

**Source:**

Rabbit

**Isotype:**

IgG

**Immunogen Catalog Number:**

AG2968

**GenBank Accession Number:**

BC018409

**GeneID (NCBI):**

92359

**UNIPROT ID:**

Q9BUF7

**Full Name:**

crumbs homolog 3 (Drosophila)

**Calculated MW:**

123 aa, 13 kDa

**Purification Method:**

Antigen affinity purification

**Recommended Dilutions:**

IHC 1:50-1:500

## Applications

**Tested Applications:**

IHC, ELISA

**Species Specificity:**

human

**Positive Controls:**

IHC : human pancreas tissue, human skeletal muscle tissue

**Note-IHC: suggested antigen retrieval with TE buffer pH 9.0; (\*) Alternatively, antigen retrieval may be performed with citrate buffer pH 6.0**

## Background Information

Crumbs is an apical transmembrane protein crucial for epithelial morphogenesis in Drosophila melanogaster embryos. Three isoforms of mammalian Crumbs have been identified, and two have been characterized. Crumbs1 (CRB1) is expressed primarily in the central nervous system, whereas Crumbs3 (CRB3) is mainly expressed in epithelial tissues and skeletal muscles. CRB3 is an N-glycosylated, small transmembrane protein. CRB3 has a conserved cytoplasmic domain containing the two motives GTY and ERLI found in Crumbs, but exhibits a very short extracellular domain without the EGF- and laminin A-like G repeats present in the other Crumbs. Through its cytoplasmic domain and its interactors (e.g., Pals1 and Par6), CRB3 plays a role in apical membrane morphogenesis and tight junction regulation. (PMID: 14718572; 12527193; 15976445)

## Storage

**Storage:**

Store at -20°C. Stable for one year after shipment.

**Storage Buffer:**

PBS with 0.02% sodium azide and 50% glycerol pH 7.3.

Aliquoting is unnecessary for -20°C storage

\*\*\* 20ul sizes contain 0.1% BSA

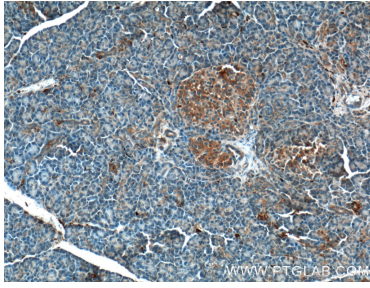
For technical support and original validation data for this product please contact:

T: 1 (888) 4PTGLAB (1-888-478-4522) (toll free in USA), or 1(312) 455-8498 (outside USA)

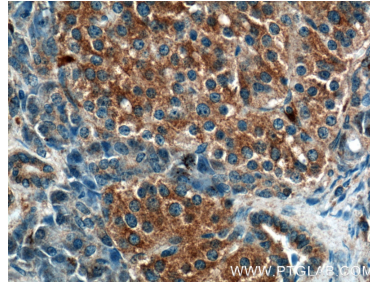
E: [proteintech@ptglab.com](mailto:proteintech@ptglab.com)  
W: [ptglab.com](http://ptglab.com)

This product is exclusively available under Proteintech Group brand and is not available to purchase from any other manufacturer.

## Selected Validation Data



Immunohistochemical analysis of paraffin-embedded human pancreas tissue slide using 12315-1-AP (CRB3 Antibody) at dilution of 1:200 (under 10x lens).



Immunohistochemical analysis of paraffin-embedded human pancreas tissue slide using 12315-1-AP (CRB3 Antibody) at dilution of 1:200 (under 40x lens).