

For Research Use Only

# SCYL2 Polyclonal antibody

Catalog Number: 12325-1-AP **2 Publications**



## Basic Information

<b>Catalog Number:</b> 12325-1-AP	<b>GenBank Accession Number:</b> BC012387	<b>Purification Method:</b> Antigen affinity purification
<b>Size:</b> 150ul , Concentration: 350 µg/ml by Nanodrop;	<b>GeneID (NCBI):</b> 55681	<b>Recommended Dilutions:</b> WB 1:1000-1:5000 IHC 1:50-1:500
<b>Source:</b> Rabbit	<b>Full Name:</b> SCY1-like 2 ( <i>S. cerevisiae</i> )	
<b>Isotype:</b> IgG	<b>Calculated MW:</b> 929 aa, 104 kDa	
<b>Immunogen Catalog Number:</b> AG2988	<b>Observed MW:</b> 104 kDa	

## Applications

### Tested Applications:

IHC, WB, ELISA

### Cited Applications:

IF, WB

### Species Specificity:

human, mouse, rat

### Cited Species:

human, mouse

**Note-IHC: suggested antigen retrieval with TE buffer pH 9.0; (\*) Alternatively, antigen retrieval may be performed with citrate buffer pH 6.0**

### Positive Controls:

**WB:** HeLa cells, HEK-293T cells, HepG2 cells, Jurkat cells, mouse uterus tissue, NIH/3T3 cells

**IHC:** mouse brain tissue, mouse cerebellum tissue

## Background Information

### Notable Publications

Author	Pubmed ID	Journal	Application
Sebastien Gingras	26203146	J Neurosci	IF
Kuangen Zhang	33852174	J Cell Biochem	WB,IF

## Storage

### Storage:

Store at -20°C. Stable for one year after shipment.

### Storage Buffer:

PBS with 0.02% sodium azide and 50% glycerol pH 7.3.

Aliquoting is unnecessary for -20°C storage

**\*\*\* 20ul sizes contain 0.1% BSA**

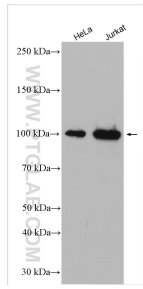
For technical support and original validation data for this product please contact:

T: 1 (888) 4PTGLAB (1-888-478-4522) (toll free in USA), or 1(312) 455-8498 (outside USA)

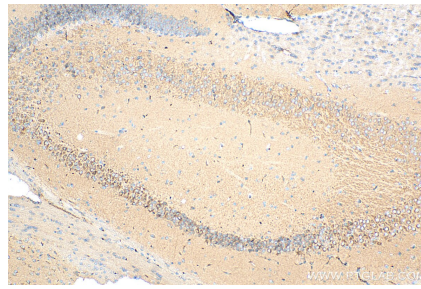
E: proteintech@ptglab.com  
W: ptglab.com

**This product is exclusively available under Proteintech Group brand and is not available to purchase from any other manufacturer.**

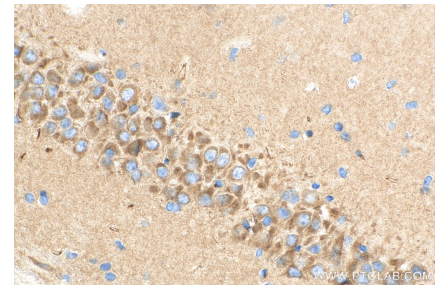
## Selected Validation Data



Various lysates were subjected to SDS PAGE followed by western blot with 12325-1-AP (SCYL2 antibody) at dilution of 1:2500 incubated at room temperature for 1.5 hours.



Immunohistochemical analysis of paraffin-embedded mouse brain tissue slide using 12325-1-AP (SCYL2 antibody) at dilution of 1:200 (under 10x lens). Heat mediated antigen retrieval with Tris-EDTA buffer (pH 9.0).



Immunohistochemical analysis of paraffin-embedded mouse brain tissue slide using 12325-1-AP (SCYL2 antibody) at dilution of 1:200 (under 40x lens). Heat mediated antigen retrieval with Tris-EDTA buffer (pH 9.0).