

For Research Use Only

TWSG1 Polyclonal antibody

Catalog Number: 12327-1-AP



Basic Information

| | | |
|--|--|--|
| Catalog Number: 12327-1-AP | GenBank Accession Number: BC020490 | Purification Method: Antigen affinity purification |
| Size: 150ul , Concentration: 260 µg/ml by Nanodrop and 200 µg/ml by Bradford method using BSA as the standard; | GeneID (NCBI): 57045 | Recommended Dilutions: WB 1:500-1:1000 IHC 1:20-1:200 |
| Source: Rabbit | Full Name: twisted gastrulation homolog 1 (Drosophila) | |
| Isotype: IgG | Calculated MW: 223 aa, 25 kDa | |
| Immunogen Catalog Number: AG2983 | Observed MW: 33 kDa | |

Applications

Tested Applications:

IHC, WB, ELISA

Species Specificity:

human, mouse, rat

Note-IHC: suggested antigen retrieval with TE buffer pH 9.0; (*) Alternatively, antigen retrieval may be performed with citrate buffer pH 6.0

Positive Controls:

WB : mouse brain tissue, mouse cerebellum tissue

IHC : mouse brain tissue, human kidney tissue

Background Information

Bone morphogenetic proteins (BMPs) are potent morphogens that are involved in cell fate determination, proliferation, apoptosis and adult tissue homeostasis. Twisted gastrulation (TWSG1) is a secreted BMP binding protein that modulates BMP ligand availability in the extracellular space. Several in vitro studies point toward an important role of TWSG1 in the regulation of the immune system (PMID: 21572028).

Storage

Storage:

Store at -20°C. Stable for one year after shipment.

Storage Buffer:

PBS with 0.02% sodium azide and 50% glycerol pH 7.3.

Aliquoting is unnecessary for -20°C storage

*** 20ul sizes contain 0.1% BSA

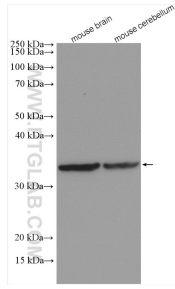
For technical support and original validation data for this product please contact:

T: 1 (888) 4PTGLAB (1-888-478-4522) (toll free in USA), or 1(312) 455-8498 (outside USA)

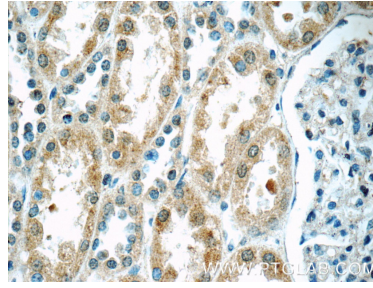
E: proteintech@ptglab.com
W: ptglab.com

This product is exclusively available under Proteintech Group brand and is not available to purchase from any other manufacturer.

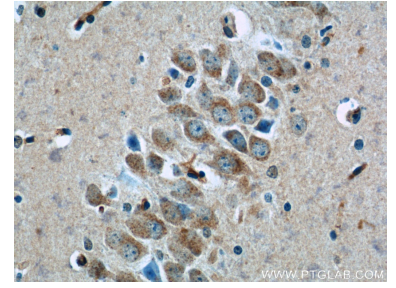
Selected Validation Data



Various lysates were subjected to SDS PAGE followed by western blot with 12327-1-AP (TWSG1 antibody) at dilution of 1:500 incubated at room temperature for 1.5 hours.



Immunohistochemical analysis of paraffin-embedded human kidney tissue slide using 12327-1-AP (TWSG1 Antibody) at dilution of 1:50 (under 40x lens).



Immunohistochemical analysis of paraffin-embedded mouse brain tissue slide using 12327-1-AP (TWSG1 Antibody) at dilution of 1:50 (under 40x lens).