

For Research Use Only

ASH2L Polyclonal antibody

Catalog Number: 12331-1-AP

Featured Product

4 Publications



Basic Information

Catalog Number:

12331-1-AP

Size:

150ul, Concentration: 267 ug/ml by Nanodrop and 267 ug/ml by Bradford method using BSA as the standard;

Source:

Rabbit

Isotype:

IgG

Immunogen Catalog Number:

AG3008

GenBank Accession Number:

BC015936

GeneID (NCBI):

9070

UNIPROT ID:

Q9UBL3

Full Name:

ash2 (absent, small, or homeotic)-like (Drosophila)

Calculated MW:

628 aa, 69 kDa

Observed MW:

80 kDa

Purification Method:

Antigen affinity purification

Recommended Dilutions:

WB 1:500-1:2400

IP 0.5-4.0 ug for 1.0-3.0 mg of total protein lysate

IHC 1:50-1:500

Applications

Tested Applications:

WB, IP, IHC, ELISA

Cited Applications:

WB, IP, IF, IHC, ChIP

Species Specificity:

human, mouse, monkey

Cited Species:

human, mouse

Note-IHC: suggested antigen retrieval with TE buffer pH 9.0; (*) Alternatively, antigen retrieval may be performed with citrate buffer pH 6.0

Positive Controls:

WB : COS-7 cells, COLO 320 cells

IP : COLO 320 cells,

IHC : human gliomas tissue,

Notable Publications

| Author | Pubmed ID | Journal | Application |
|------------|-----------|---------------|-------------------|
| Kai Zeng | 32279431 | Cancer Sci | WB,IHC,IF,IP,ChIP |
| Gongwei Wu | 28474697 | Nat Commun | WB |
| Minhan Ka | 35672601 | Mol Neurobiol | WB,IP |

Storage

Storage:

Store at -20°C. Stable for one year after shipment.

Storage Buffer:

PBS with 0.02% sodium azide and 50% glycerol pH 7.3.

Aliquoting is unnecessary for -20°C storage

*** 20ul sizes contain 0.1% BSA

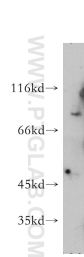
For technical support and original validation data for this product please contact:

T: 1 (888) 4PTGLAB (1-888-478-4522) (toll free in USA), or 1(312) 455-8498 (outside USA)

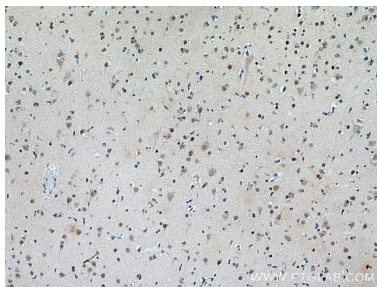
E: proteintech@ptglab.com
W: ptglab.com

This product is exclusively available under Proteintech Group brand and is not available to purchase from any other manufacturer.

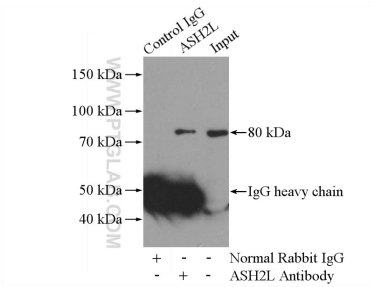
Selected Validation Data



COS-7 cells were subjected to SDS PAGE followed by western blot with 12331-1-AP (ASH2L antibody) at dilution of 1:1000 incubated at room temperature for 1.5 hours.



Immunohistochemical analysis of paraffin-embedded human gliomas tissue slide using 12331-1-AP (ASH2L antibody) at dilution of 1:200 (under 10x lens). Heat mediated antigen retrieval with Tris-EDTA buffer (pH 9.0).



IP result of anti-ASH2L (IP:12331-1-AP, 4ug; Detection:12331-1-AP 1:500) with COLO 320 cells lysate 2000ug.