

For Research Use Only

CXCL1 Polyclonal antibody

Catalog Number: 12335-1-AP

Featured Product

73 Publications



Basic Information

Catalog Number:

12335-1-AP

Size:

150ul, Concentration: 300 ug/ml by Nanodrop;

Source:

Rabbit

Isotype:

IgG

Immunogen Catalog Number:

AG2917

GenBank Accession Number:

BC011976

GeneID (NCBI):

2919

UNIPROT ID:

P09341

Full Name:

chemokine (C-X-C motif) ligand 1 (melanoma growth stimulating activity, alpha)

Calculated MW:

8 kDa to 14 kDa

Observed MW:

12 kDa

Purification Method:

Antigen affinity purification

Recommended Dilutions:

WB 1:500-1:2000

IHC 1:50-1:500

Applications

Tested Applications:

WB, IHC, ELISA

Cited Applications:

WB, IHC, IF, ELISA

Species Specificity:

human

Cited Species:

human, mouse

Positive Controls:

WB : LPS and Protein transport inhibitor treated HUVEC cells,

IHC : human gliomas tissue,

Note-IHC: suggested antigen retrieval with TE buffer pH 9.0; (*) Alternatively, antigen retrieval may be performed with citrate buffer pH 6.0

Background Information

CXCL1a is a member of CXC family and also known as keratinocyte-derived chemokines (KC) or growth-related oncogene (GRO). CXCL1 is expressed by macrophages, neutrophils and epithelial cells. CXCL1 binding specifically to the CXC chemokine receptor CXCR2, is involved in fibrogenesis and angiogenesis. This protein also plays a role in inflammation and as a chemoattractant for neutrophils. CXCL1 is upregulated in some types of human cancer, including colorectal, bladder, breast, prostate and skin cancers.

Notable Publications

Author	Pubmed ID	Journal	Application
Cristabelle De Souza	33126568	Int J Mol Sci	IHC,IF
Jiali Dong	34706245	Cell Rep	IHC
Jian Chen	34722509	Front Cell Dev Biol	IF

Storage

Storage:

Store at -20°C. Stable for one year after shipment.

Storage Buffer:

PBS with 0.02% sodium azide and 50% glycerol pH 7.3.

Aliquoting is unnecessary for -20°C storage

*** 20ul sizes contain 0.1% BSA

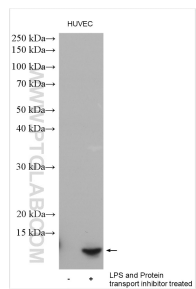
For technical support and original validation data for this product please contact:

T: 1 (888) 4PTGLAB (1-888-478-4522) (toll free in USA), or 1(312) 455-8498 (outside USA)

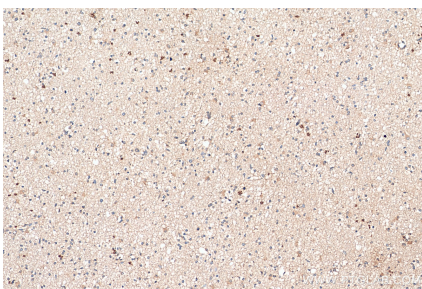
E: proteintech@ptglab.com
W: ptglab.com

This product is exclusively available under Proteintech Group brand and is not available to purchase from any other manufacturer.

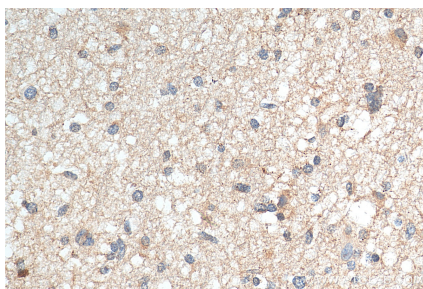
Selected Validation Data



LPS and Brefeldin A treated HUVEC cells were subjected to SDS PAGE followed by western blot with 12335-1-AP (CXCL1 antibody) at dilution of 1:1000 and incubated at room temperature for 1.5 hours.



Immunohistochemical analysis of paraffin-embedded human gliomas tissue slide using 12335-1-AP (CXCL1 antibody) at dilution of 1:200 (under 10x lens). Heat mediated antigen retrieval with Tris-EDTA buffer (pH 9.0).



Immunohistochemical analysis of paraffin-embedded human gliomas tissue slide using 12335-1-AP (CXCL1 antibody) at dilution of 1:200 (under 40x lens). Heat mediated antigen retrieval with Tris-EDTA buffer (pH 9.0).