

For Research Use Only

MAGOH Polyclonal antibody, PBS Only

Catalog Number: 12347-1-PBS



Basic Information

Catalog Number: 12347-1-PBS	GenBank Accession Number: BC018211	Purification Method: Antigen affinity purification
Size: 100ug, Concentration: 1 mg/ml by Nanodrop;	GeneID (NCBI): 4116	
Source: Rabbit	UNIPROT ID: P61326	
Isotype: IgG	Full Name: mago-nashi homolog, proliferation-associated (Drosophila)	
Immunogen Catalog Number: AG3004	Calculated MW: 146 aa, 17 kDa	
	Observed MW: 17 kDa	

Applications

Tested Applications:
WB, IHC, IP, Indirect ELISA

Species Specificity:
human, mouse, rat

Background Information

MAGOH, belonging to the mago nashi family, is a component of a splicing-dependent multiprotein exon junction complex (EJC) deposited at splice junction on mRNAs. The EJC is a dynamic structure consisting of a few core proteins and several more peripheral nuclear and cytoplasmic associated factors that join the complex only transiently either during EJC assembly or during subsequent mRNA metabolism. Core components of the EJC functions to mark the position of the exon-exon junction in the mature mRNA and thereby influences downstream processes of gene expression including mRNA splicing, nuclear mRNA export, subcellular mRNA localization, translation efficiency and nonsense-mediated mRNA decay (NMD). MAGOH regulates the transcriptional activation of STAT3 by interfering complex formation between STAT3 and a core EJC component Y14.

Storage

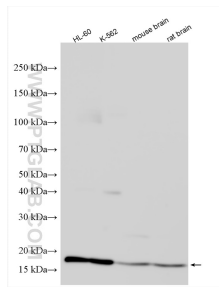
Storage:
Store at -80°C.

Storage Buffer:
PBS only, pH7.3

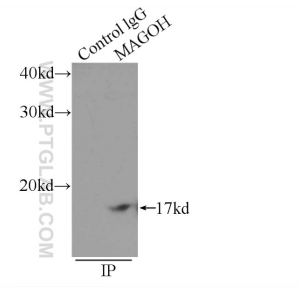
For technical support and original validation data for this product please contact:
T: 1 (888) 4PTGLAB (1-888-478-4522) (toll free in USA), or 1(312) 455-8498 (outside USA) E: proteintech@ptglab.com
W: ptglab.com

This product is exclusively available under Proteintech Group brand and is not available to purchase from any other manufacturer.

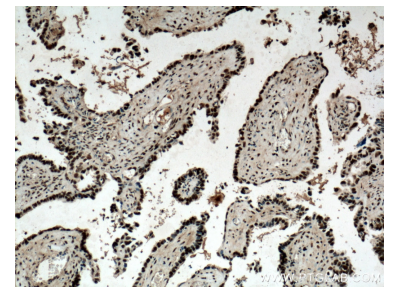
Selected Validation Data



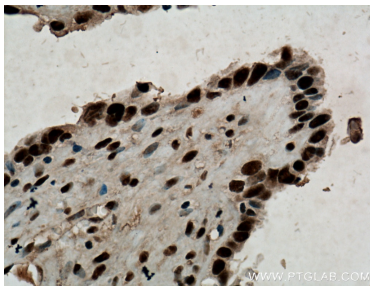
Various lysates were subjected to SDS PAGE followed by western blot with 12347-1-AP (MAGOH antibody) at dilution of 1:1500 incubated at room temperature for 1.5 hours. This data was developed using the same antibody clone with 12347-1-PBS in a different storage buffer formulation.



IP result of anti-MAGOH (IP:12347-1-AP, 3 μ g; Detection:12347-1-AP 1:500) with K-562 cells lysate 2400 μ g. This data was developed using the same antibody clone with 12347-1-PBS in a different storage buffer formulation.



Immunohistochemical analysis of paraffin-embedded human ovary tumor tissue slide using 12347-1-AP (MAGOH antibody) at dilution of 1:200 (under 10x lens. Heat mediated antigen retrieval with Tris-EDTA buffer (pH 9.0). This data was developed using the same antibody clone with 12347-1-PBS in a different storage buffer formulation.



Immunohistochemical analysis of paraffin-embedded human ovary tumor tissue slide using 12347-1-AP (MAGOH antibody) at dilution of 1:200 (under 40x lens. Heat mediated antigen retrieval with Tris-EDTA buffer (pH 9.0). This data was developed using the same antibody clone with 12347-1-PBS in a different storage buffer formulation.