

For Research Use Only

# ESM1 Polyclonal antibody

Catalog Number:12355-1-AP



## Basic Information

### Catalog Number:

12355-1-AP

### Size:

150ul , Concentration: 350 ug/ml by Nanodrop;

### Source:

Rabbit

### Isotype:

IgG

### Immunogen Catalog Number:

AG3019

### GenBank Accession Number:

BC011989

### GeneID (NCBI):

11082

### UNIPROT ID:

Q9NQ30

### Full Name:

endothelial cell-specific molecule 1

### Calculated MW:

184 aa, 20 kDa

### Observed MW:

20 kDa

### Purification Method:

Antigen affinity purification

### Recommended Dilutions:

WB 1:200-1:1000

IP 0.5-4.0 ug for 1.0-3.0 mg of total protein lysate

## Applications

### Tested Applications:

WB, IP, ELISA

### Species Specificity:

human

### Positive Controls:

WB : HUVEC cells,

IP : HUVEC cells,

## Background Information

ESM1 is a secreted protein mainly expressed in the endothelial cells. The deduced 184-amino acid protein is cysteine rich with an N-terminal hydrophobic signal sequence. Expression of ESM1 was tested by Northern blot analysis and RT-PCR and was found to be constitutive in a HUVEC cell line, but not in any other cell line tested. Constitutive ESM1 expression in human tissue was restricted to lung.

## Storage

### Storage:

Store at -20°C. Stable for one year after shipment.

### Storage Buffer:

PBS with 0.02% sodium azide and 50% glycerol pH 7.3.

Aliquoting is unnecessary for -20°C storage

\*\*\* 20ul sizes contain 0.1% BSA

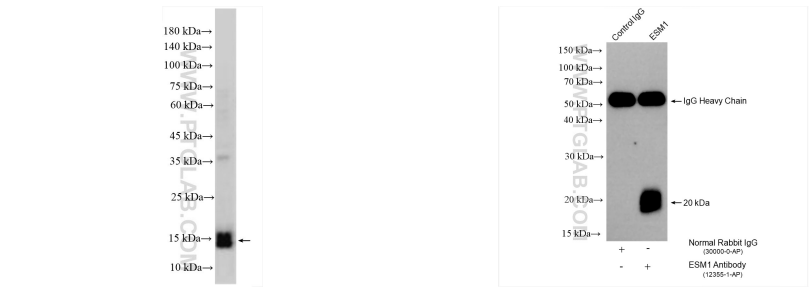
For technical support and original validation data for this product please contact:

T: 1 (888) 4PTGLAB (1-888-478-4522) (toll free in USA), or 1(312) 455-8498 (outside USA)

E: [proteintech@ptglab.com](mailto:proteintech@ptglab.com)  
W: [ptglab.com](http://ptglab.com)

This product is exclusively available under Proteintech Group brand and is not available to purchase from any other manufacturer.

Selected Validation Data



HUVEC cells were subjected to SDS PAGE followed by western blot with 12355-1-AP (ESM1 antibody) at dilution of 1:300 incubated at room temperature for 1.5 hours.

IP result of anti-ESM1 (IP:12355-1-AP, 4ug; Detection:12355-1-AP 1:300) with HUVEC cells lysate 640 ug.