

For Research Use Only

ESM1 Polyclonal antibody, PBS Only

Catalog Number:12355-1-PBS



Basic Information

Catalog Number: 12355-1-PBS	GenBank Accession Number: BC011989	Purification Method: Antigen affinity purification
Size: 100ug , Concentration: 1 mg/ml by Nanodrop;	GeneID (NCBI): 11082	
Source: Rabbit	UNIPROT ID: Q9NQ30	
Isotype: IgG	Full Name: endothelial cell-specific molecule 1	
Immunogen Catalog Number: AG3019	Calculated MW: 184 aa, 20 kDa	
	Observed MW: 14 kDa	

Applications

Tested Applications:
WB, IP, Indirect ELISA

Species Specificity:
human

Background Information

ESM1 is a secreted protein mainly expressed in the endothelial cells. The deduced 184-amino acid protein is cysteine rich with an N-terminal hydrophobic signal sequence. Expression of ESM1 was tested by Northern blot analysis and RT-PCR and was found to be constitutive in a HUVEC cell line, but not in any other cell line tested. Constitutive ESM1 expression in human tissue was restricted to lung.

Storage

Storage:
Store at -80°C.

Storage Buffer:
PBS only, pH7.3

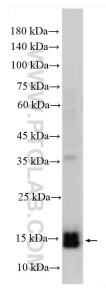
For technical support and original validation data for this product please contact:

T: 1 (888) 4PTGLAB (1-888-478-4522) (toll free
in USA), or 1(312) 455-8498 (outside USA)

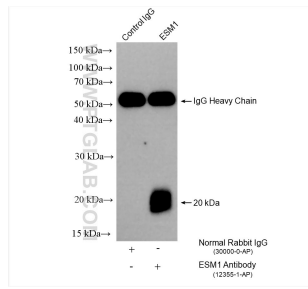
E: proteintech@ptglab.com
W: ptglab.com

This product is exclusively available under Proteintech Group brand and is not available to purchase from any other manufacturer.

Selected Validation Data



HUVEC cells were subjected to SDS PAGE followed by western blot with 12355-1-AP (ESM1 antibody) at dilution of 1:300 incubated at room temperature for 1.5 hours. This data was developed using the same antibody clone with 12355-1-PBS in a different storage buffer formulation.



IP result of anti-ESM1 (IP:12355-1-AP, 4ug; Detection:12355-1-AP 1:300) with HUVEC cells lysate 640 ug. This data was developed using the same antibody clone with 12355-1-PBS in a different storage buffer formulation.