

For Research Use Only

MRRF Polyclonal antibody

Catalog Number: 12357-2-AP

5 Publications



Basic Information

Catalog Number:

12357-2-AP

Size:

150ul, Concentration: 700 ug/ml by Nanodrop and 300 ug/ml by Bradford method using BSA as the standard;

Source:

Rabbit

Isotype:

IgG

Immunogen Catalog Number:

AG3021

GenBank Accession Number:

BC013049

GeneID (NCBI):

92399

UNIPROT ID:

Q96E11

Full Name:

mitochondrial ribosome recycling factor

Calculated MW:

262 aa, 29 kDa

Observed MW:

25 kDa

Purification Method:

Antigen affinity purification

Recommended Dilutions:

WB 1:2000-1:10000

IHC 1:20-1:200

Applications

Tested Applications:

WB, IHC, ELISA

Cited Applications:

WB

Species Specificity:

human

Cited Species:

mouse, rat

Note-IHC: suggested antigen retrieval with TE buffer pH 9.0; (*) Alternatively, antigen retrieval may be performed with citrate buffer pH 6.0

Positive Controls:

WB : HEK-293 cells, A431 cells, HeLa cells, HepG2 cells

IHC : human pancreas cancer tissue,

Notable Publications

Author	Pubmed ID	Journal	Application
Ying Shu	36314841	EMBO J	
Takumi Yokokawa	32446358	Biochem Biophys Res Commun	WB
Zhiyuan Tian	38677116	J Hazard Mater	WB

Storage

Storage:

Store at -20°C. Stable for one year after shipment.

Storage Buffer:

PBS with 0.02% sodium azide and 50% glycerol pH 7.3.

Aliquoting is unnecessary for -20°C storage

*** 20ul sizes contain 0.1% BSA

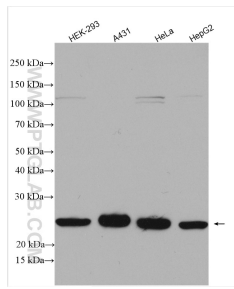
For technical support and original validation data for this product please contact:

T: 1 (888) 4PTGLAB (1-888-478-4522) (toll free in USA), or 1(312) 455-8498 (outside USA)

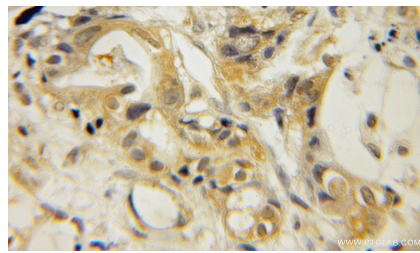
E: proteintech@ptglab.com
W: ptglab.com

This product is exclusively available under Proteintech Group brand and is not available to purchase from any other manufacturer.

Selected Validation Data



Various lysates were subjected to SDS PAGE followed by western blot with 12357-2-AP (MRRF antibody) at dilution of 1:5000 incubated at room temperature for 1.5 hours.



Immunohistochemical analysis of paraffin-embedded human pancreas cancer using 12357-2-AP (MRRF antibody) at dilution of 1:50 (under 10x lens).