

For Research Use Only

MXI1 Polyclonal antibody

Catalog Number: 12360-1-AP

2 Publications



Basic Information

Catalog Number:

12360-1-AP

Size:

150ul , Concentration: 170 ug/ml by Nanodrop and 140 ug/ml by Bradford method using BSA as the standard;

Source:

Rabbit

Isotype:

IgG

Immunogen Catalog Number:

AG3024

GenBank Accession Number:

BC012907

GeneID (NCBI):

4601

UNIPROT ID:

P50539

Full Name:

MAX interactor 1

Calculated MW:

228 aa, 26 kDa

Observed MW:

26-29 kDa

Purification Method:

Antigen affinity purification

Recommended Dilutions:

WB 1:200-1:1000

Applications

Tested Applications:

WB, ELISA

Cited Applications:

WB

Species Specificity:

human, mouse, rat

Cited Species:

human

Positive Controls:

WB : SH-SY5Y cells, mouse brain tissue

Background Information

MXI1 is a transcription factor containing a basic helix-loop-helix leucine zipper (bHLHzip) and belongs to the Myc-Max-Mad transcriptional network. It is a transcriptional repressor thought to negatively regulate MYC function, and is therefore a potential tumor suppressor. This protein inhibits the transcriptional activity of MYC by competing for MAX, another basic helix-loop-helix protein that binds to MYC and is required for its function. Defects in this gene are frequently found in patients with prostate tumors.

Notable Publications

Author	Pubmed ID	Journal	Application
Fengfeng Wu	35071320	Front Mol Biosci	WB
Yige Wu	36973268	Nat Commun	WB

Storage

Storage:

Store at -20°C. Stable for one year after shipment.

Storage Buffer:

PBS with 0.02% sodium azide and 50% glycerol pH 7.3.

Aliquoting is unnecessary for -20°C storage

*** 20ul sizes contain 0.1% BSA

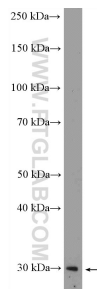
For technical support and original validation data for this product please contact:

T: 1 (888) 4PTGLAB (1-888-478-4522) (toll free in USA), or 1(312) 455-8498 (outside USA)

E: proteintech@ptglab.com
W: ptglab.com

This product is exclusively available under Proteintech Group brand and is not available to purchase from any other manufacturer.

Selected Validation Data



SH-SY5Y cells were subjected to SDS PAGE followed by western blot with 12360-1-AP (MXI1 Antibody) at dilution of 1:300 incubated at room temperature for 1.5 hours.