

For Research Use Only

CCNDBP1 Polyclonal antibody

Catalog Number: 12363-1-AP

11 Publications



Basic Information

Catalog Number:

12363-1-AP

Size:

150ul, Concentration: 500 ug/ml by Nanodrop and 280 ug/ml by Bradford method using BSA as the standard;

Source:

Rabbit

Isotype:

IgG

Immunogen Catalog Number:

AG3032

GenBank Accession Number:

BC009689

GeneID (NCBI):

23582

UNIPROT ID:

O95273

Full Name:

cyclin D-type binding-protein 1

Calculated MW:

360 aa, 40 kDa

Purification Method:

Antigen affinity purification

Recommended Dilutions:

WB 1:500-1:1000

IHC 1:20-1:200

Applications

Tested Applications:

WB, IHC, ELISA

Cited Applications:

WB, IHC, CoIP

Species Specificity:

human, mouse, rat

Cited Species:

human, rat

Note-IHC: suggested antigen retrieval with TE buffer pH 9.0; (*) Alternatively, antigen retrieval may be performed with citrate buffer pH 6.0

Positive Controls:

WB : HeLa cells,

IHC : human lung cancer tissue,

Background Information

CCNDBP1, also named as DIP1, GCIP and HHM, is a helix-loop-helix protein which suppresses tumorigenesis. CCNDBP1 specifically interacts with one of the class III HDAC proteins, SirT6, which is important for maintaining genome stability. CCNDBP1 may negatively regulate cell cycle progression.

Notable Publications

Author	Pubmed ID	Journal	Application
Lingge Yang	34631521	Front Oncol	WB,IHC
Yanmin Wang	30275708	Onco Targets Ther	WB
Yao Liu	29799152	J Cell Mol Med	WB,CoIP

Storage

Storage:

Store at -20°C. Stable for one year after shipment.

Storage Buffer:

PBS with 0.02% sodium azide and 50% glycerol pH 7.3.

Aliquoting is unnecessary for -20°C storage

*** 20ul sizes contain 0.1% BSA

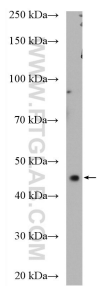
For technical support and original validation data for this product please contact:

T: 1 (888) 4PTGLAB (1-888-478-4522) (toll free in USA), or 1(312) 455-8498 (outside USA)

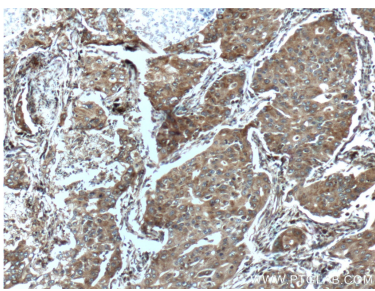
E: proteintech@ptglab.com
W: ptglab.com

This product is exclusively available under Proteintech Group brand and is not available to purchase from any other manufacturer.

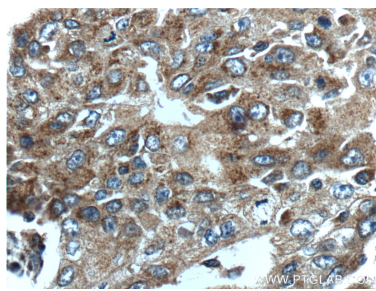
Selected Validation Data



HeLa cells were subjected to SDS PAGE followed by western blot with 12363-1-AP (CCNDBP1 antibody) at dilution of 1:600 incubated at room temperature for 1.5 hours.



Immunohistochemical analysis of paraffin-embedded human lung cancer tissue slide using 12363-1-AP (CCNDBP1 Antibody) at dilution of 1:200 (under 10x lens).



Immunohistochemical analysis of paraffin-embedded human lung cancer tissue slide using 12363-1-AP (CCNDBP1 Antibody) at dilution of 1:200 (under 40x lens).