

For Research Use Only

KPNA6 Polyclonal antibody

Catalog Number: 12366-2-AP

3 Publications



Basic Information

Catalog Number:

12366-2-AP

Size:

150ul, Concentration: 260 ug/ml by Nanodrop and 193 ug/ml by Bradford method using BSA as the standard;

Source:

Rabbit

Isotype:

IgG

Immunogen Catalog Number:

AG3040

GenBank Accession Number:

BC020520

GeneID (NCBI):

23633

UNIPROT ID:

O60684

Full Name:

karyopherin alpha 6 (importin alpha 7)

Calculated MW:

536 aa, 60 kDa

Observed MW:

55-60 kDa

Purification Method:

Antigen affinity purification

Recommended Dilutions:

WB 1:500-1:2000

IHC 1:50-1:500

Applications

Tested Applications:

WB, IHC, ELISA

Cited Applications:

WB

Species Specificity:

human

Cited Species:

human

Positive Controls:

WB : BxPC-3 cells, HeLa cells

IHC : human breast cancer tissue, human prostate cancer tissue

Note-IHC: suggested antigen retrieval with TE buffer pH 9.0; (*) Alternatively, antigen retrieval may be performed with citrate buffer pH 6.0

Notable Publications

Author	Pubmed ID	Journal	Application
Sergi Marco	34819513	Nat Commun	WB
Anna Nakanishi	36366568	Viruses	WB
Yisha Zhuo	33141406	Virol Sin	WB

Storage

Storage:

Store at -20°C. Stable for one year after shipment.

Storage Buffer:

PBS with 0.02% sodium azide and 50% glycerol pH 7.3.

Aliquoting is unnecessary for -20°C storage

*** 20ul sizes contain 0.1% BSA

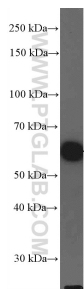
For technical support and original validation data for this product please contact:

T: 1 (888) 4PTGLAB (1-888-478-4522) (toll free in USA), or 1(312) 455-8498 (outside USA)

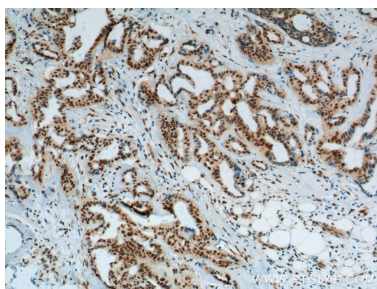
E: proteintech@ptglab.com
W: ptglab.com

This product is exclusively available under Proteintech Group brand and is not available to purchase from any other manufacturer.

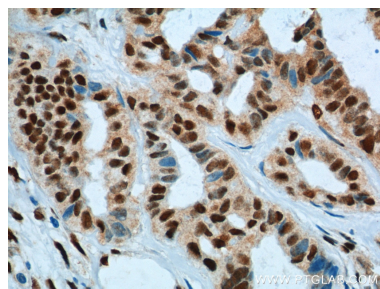
Selected Validation Data



BxPC-3 cells were subjected to SDS PAGE followed by western blot with 12366-2-AP (KPNA6 Antibody) at dilution of 1:1000 incubated at room temperature for 1.5 hours.



Immunohistochemical analysis of paraffin-embedded human breast cancer tissue slide using 12366-2-AP (KPNA6 Antibody) at dilution of 1:200 (under 10x lens). Heat mediated antigen retrieval with Tris-EDTA buffer (pH 9.0).



Immunohistochemical analysis of paraffin-embedded human breast cancer tissue slide using 12366-2-AP (KPNA6 Antibody) at dilution of 1:200 (under 40x lens). Heat mediated antigen retrieval with Tris-EDTA buffer (pH 9.0).