

For Research Use Only

14-3-3 GAMMA-Specific Polyclonal antibody



Catalog Number: 12381-1-AP

Featured Product

5 Publications

Basic Information

Catalog Number:

12381-1-AP

Size:

150ul, Concentration: 600 µg/ml by Nanodrop;

Source:

Rabbit

Isotype:

IgG

Immunogen Catalog Number:

AG3047

GenBank Accession Number:

BC020963

GeneID (NCBI):

7532

Full Name:

tyrosine 3-monooxygenase/tryptophan 5-monooxygenase activation protein, gamma polypeptide

Calculated MW:

247 aa, 28 kDa

Observed MW:

28-33 kDa

Purification Method:

Antigen affinity purification

Recommended Dilutions:

WB 1:500-1:1000
IP 0.5-4.0 µg for IP and 1:500-1:1000 for WB
IHC 1:50-1:500
IF 1:10-1:100

Applications

Tested Applications:

IF, IHC, IP, WB, ELISA

Cited Applications:

CoIP, IP, WB

Species Specificity:

human, mouse, rat, Canine

Cited Species:

human

Positive Controls:

WB : mouse IMCD3 cells (RNAi), A431 cells, K-562 cells, NIH/3T3 cells

IP : mouse brain tissue,

IHC : human lung cancer tissue, human breast cancer tissue

IF : MDCK cells,

Note-IHC: suggested antigen retrieval with TE buffer pH 9.0; (*) Alternatively, antigen retrieval may be performed with citrate buffer pH 6.0

Background Information

14-3-3 gamma (also known as YWHAG) is a member of 14-3-3 proteins which were the first phosphoserine/phosphothreonine-binding proteins to be discovered. 14-3-3 family members interact with a wide spectrum of proteins and possess diverse functions. Mammals express seven distinct 14-3-3 isoforms (gamma, epsilon, beta, zeta, sigma, theta, tau) that form multiple homo- and hetero- dimers. 14-3-3 proteins display the highest expression levels in the brain, and have been implicated in several neurodegenerative diseases, including Alzheimer's disease and amyotrophic lateral sclerosis. This antibody specifically recognizes gamma isoform of 14-3-3.

Notable Publications

Author	Pubmed ID	Journal	Application
Maria A Ahonen	33075494	Biochim Biophys Acta Mol Cell Biol Lipids	WB
Wenjun Wang	33473107	Nat Commun	CoIP, WB
Songlin Zeng	25604190	Proteomics	WB

Storage

Storage:

Store at -20°C. Stable for one year after shipment.

Storage Buffer:

PBS with 0.02% sodium azide and 50% glycerol pH 7.3.

Aliquoting is unnecessary for -20°C storage

*** 20ul sizes contain 0.1% BSA

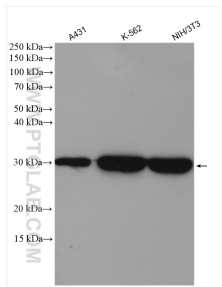
For technical support and original validation data for this product please contact:

T: 1 (888) 4PTGLAB (1-888-478-4522) (toll free in USA), or 1(312) 455-8498 (outside USA)

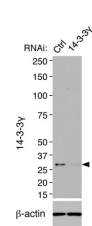
E: proteintech@ptglab.com
W: ptglab.com

This product is exclusively available under Proteintech Group brand and is not available to purchase from any other manufacturer.

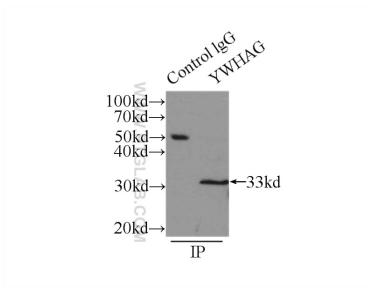
Selected Validation Data



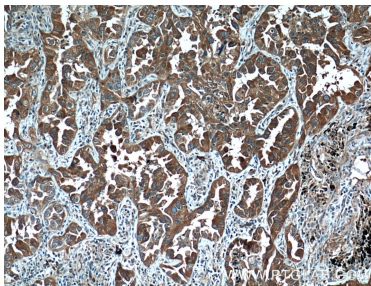
Various lysates were subjected to SDS PAGE followed by western blot with 12381-1-AP (14-3-3 GAMMA-Specific antibody) at dilution of 1:1000 incubated at room temperature for 1.5 hours.



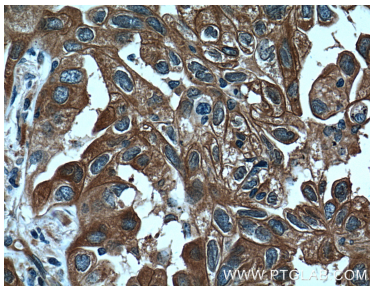
siRNA result of 12381-1-AP (anti-14-3-3G) in Mouse IMCD3 cells From Dr.Seongjin Seo.



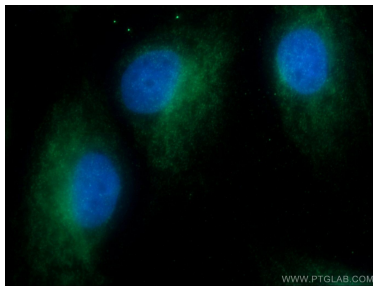
IP Result of anti-14-3-3 GAMMA-Specific (IP:12381-1-AP, 3ug; Detection:12381-1-AP 1:800) with mouse brain tissue lysate 8000ug.



Immunohistochemical analysis of paraffin-embedded human lung cancer tissue slide using 12381-1-AP (14-3-3 GAMMA-Specific antibody) at dilution of 1:200 (under 10x lens). Heat mediated antigen retrieval with Tris-EDTA buffer (pH 9.0).



Immunohistochemical analysis of paraffin-embedded human lung cancer tissue slide using 12381-1-AP (14-3-3 GAMMA-Specific antibody) at dilution of 1:200 (under 40x lens). Heat mediated antigen retrieval with Tris-EDTA buffer (pH 9.0).



Immunofluorescent analysis of MDCK cells using 12381-1-AP (14-3-3 GAMMA-Specific antibody) at dilution of 1:25 and Alexa Fluor 488-conjugated AffiniPure Goat Anti-Rabbit IgG(H+L).