

For Research Use Only

MEF2A Polyclonal antibody

Catalog Number: 12382-1-AP

5 Publications



Basic Information

| | | |
|--|---|--|
| Catalog Number: 12382-1-AP | GenBank Accession Number: BC013437 | Purification Method: Antigen affinity purification |
| Size: 150ul , Concentration: 750 µg/ml by Nanodrop and 247 µg/ml by Bradford method using BSA as the standard; | GeneID (NCBI): 4205 | Recommended Dilutions: WB 1:500-1:2000 |
| Source: Rabbit | Full Name: myocyte enhancer factor 2A | |
| Isotype: IgG | Calculated MW: 499 aa, 54 kDa | |
| Immunogen Catalog Number: AG3049 | Observed MW: 54 kDa | |

Applications

| | |
|--|--|
| Tested Applications: WB, ELISA | Positive Controls: WB : mouse pancreas tissue, |
| Cited Applications: IP, WB | |
| Species Specificity: human, mouse, rat | |
| Cited Species: human, mouse | |

Background Information

Notable Publications

| Author | Pubmed ID | Journal | Application |
|--------------|-----------|--------------------------|-------------|
| Ying Li | 34548056 | BMC Musculoskelet Disord | WB |
| Cuiting Zhao | 33545365 | Vascul Pharmacol | WB |
| Xiaoxue Li | 34957213 | Front Mol Biosci | WB |

Storage

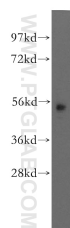
Storage:
Store at -20°C. Stable for one year after shipment.
Storage Buffer:
PBS with 0.02% sodium azide and 50% glycerol pH 7.3.
Aliquoting is unnecessary for -20°C storage

*** 20ul sizes contain 0.1% BSA

For technical support and original validation data for this product please contact:
T: 1 (888) 4PTGLAB (1-888-478-4522) (toll free in USA), or 1(312) 455-8498 (outside USA)
E: proteintech@ptglab.com
W: ptglab.com

This product is exclusively available under Proteintech Group brand and is not available to purchase from any other manufacturer.

Selected Validation Data



mouse pancreas tissue were subjected to SDS PAGE followed by western blot with 12382-1-AP (MEF2A antibody) at dilution of 1:400 incubated at room temperature for 1.5 hours.