

For Research Use Only

# UCHL3 Polyclonal antibody

Catalog Number: 12384-1-AP

Featured Product

10 Publications



## Basic Information

<b>Catalog Number:</b> 12384-1-AP	<b>GenBank Accession Number:</b> BC018125	<b>Purification Method:</b> Antigen affinity purification
<b>Size:</b> 150ul , Concentration: 500 µg/ml by Nanodrop and 220 µg/ml by Bradford method using BSA as the standard;	<b>GeneID (NCBI):</b> 7347	<b>Recommended Dilutions:</b> WB 1:1000-1:6000 IP 0.5-4.0 ug for 1.0-3.0 mg of total protein lysate IHC 1:20-1:200
<b>Source:</b> Rabbit	<b>Full Name:</b> ubiquitin carboxyl-terminal esterase L3 (ubiquitin thiolesterase)	
<b>Isotype:</b> IgG	<b>Calculated MW:</b> 26 kDa	
<b>Immunogen Catalog Number:</b> AG3053	<b>Observed MW:</b> 26 kDa	

## Applications

<b>Tested Applications:</b> IHC, IP, WB, ELISA	<b>Positive Controls:</b> WB : HeLa cells, rat spleen tissue, Jurkat cells IP : HeLa cells, IHC : human pancreas cancer tissue,
<b>Cited Applications:</b> IF, IHC, IP, WB	
<b>Species Specificity:</b> human, mouse, rat	
<b>Cited Species:</b> human, mouse	
<b>Note-IHC: suggested antigen retrieval with TE buffer pH 9.0; (*) Alternatively, antigen retrieval may be performed with citrate buffer pH 6.0</b>	

## Background Information

UCH-L3 belongs to the ubiquitin C-terminal hydrolase family that deubiquitinates ubiquitin-protein conjugates in the ubiquitin-proteasome system. This enzyme indirectly increases the phosphorylation of IGF1R, AKT, FOXO1 and promotes insulin-signaling and insulin-induced adipogenesis. It is required for stress-response retinal, skeletal muscle and germ cell maintenance and may be involved in working memory.

## Notable Publications

Author	Pubmed ID	Journal	Application
Zhiwang Song	31598398	Am J Cancer Res	WB,IHC
Christian Grethe	36216817	Nat Commun	WB
Qian Lei	32606430	Sci Rep	WB

## Storage

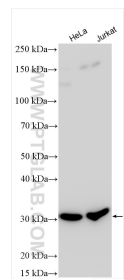
**Storage:**  
Store at -20°C. Stable for one year after shipment.  
**Storage Buffer:**  
PBS with 0.02% sodium azide and 50% glycerol pH 7.3.  
Aliquoting is unnecessary for -20°C storage

\*\*\* 20ul sizes contain 0.1% BSA

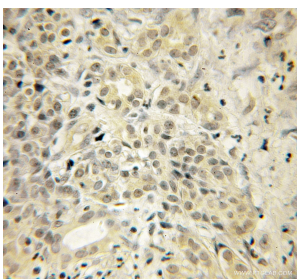
For technical support and original validation data for this product please contact:  
T: 1 (888) 4PTGLAB (1-888-478-4522) (toll free in USA), or 1(312) 455-8498 (outside USA)  
E: proteintech@ptglab.com  
W: ptglab.com

This product is exclusively available under Proteintech Group brand and is not available to purchase from any other manufacturer.

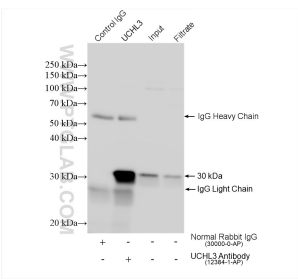
Selected Validation Data



Various lysates were subjected to SDS PAGE followed by western blot with 12384-1-AP (UCHL3 antibody) at dilution of 1:3000 incubated at room temperature for 1.5 hours.



Immunohistochemical analysis of paraffin-embedded human pancreas cancer using 12384-1-AP (UCHL3 antibody) at dilution of 1:50 (under 10x lens).



IP result of anti-UCHL3(IP:12384-1-AP, 4ug; Detection:12384-1-AP 1:3000) with HeLa cells lysate 1320 ug.