

For Research Use Only

# BEX1/2 Polyclonal antibody

Catalog Number: 12390-1-AP **4 Publications**



## Basic Information

<b>Catalog Number:</b> 12390-1-AP	<b>GenBank Accession Number:</b> BC015522	<b>Purification Method:</b> Antigen affinity purification
<b>Size:</b> 150ul , Concentration: 500 µg/ml by Nanodrop and 187 µg/ml by Bradford method using BSA as the standard;	<b>GeneID (NCBI):</b> 84707	<b>Recommended Dilutions:</b> WB 1:500-1:1000 IHC 1:20-1:200
<b>Source:</b> Rabbit	<b>Full Name:</b> brain expressed X-linked 2	
<b>Isotype:</b> IgG	<b>Calculated MW:</b> 128 aa, 15 kDa	
<b>Immunogen Catalog Number:</b> AG3066	<b>Observed MW:</b> 10-15 kDa	

## Applications

<b>Tested Applications:</b> IHC, WB, ELISA	<b>Positive Controls:</b> WB : human brain tissue, IHC : human medulloblastoma tissue,
<b>Cited Applications:</b> IF, IHC, WB	
<b>Species Specificity:</b> human	
<b>Cited Species:</b> human, mouse	
<b>Note-IHC: suggested antigen retrieval with TE buffer pH 9.0; (*) Alternatively, antigen retrieval may be performed with citrate buffer pH 6.0</b>	

## Background Information

BEX1 is a signaling adapter molecule involved in p75NTR/NGFR signaling. It lays a role in cell cycle progression and neuronal differentiation. BEX1 inhibits neuronal differentiation in response to nerve growth factor (NGF). BEX2 is a regulator of mitochondrial apoptosis and G1 cell cycle in breast cancer. It regulates the level of PP2A regulatory subunit B and PP2A phosphatase activity. The homology between human BEX1 and BEX2 is 94%. This antibody detects both BEX1 and BEX2.

## Notable Publications

Author	Pubmed ID	Journal	Application
Yeting Hu	28367093	Int J Biol Sci	WB
Emi Hibino	35144600	BMC Biol	IF
Ning Mu	37777549	Cell Death Dis	IHC,IF

## Storage

**Storage:**  
Store at -20°C. Stable for one year after shipment.  
**Storage Buffer:**  
PBS with 0.02% sodium azide and 50% glycerol pH 7.3.  
Aliquoting is unnecessary for -20°C storage

\*\*\* 20ul sizes contain 0.1% BSA

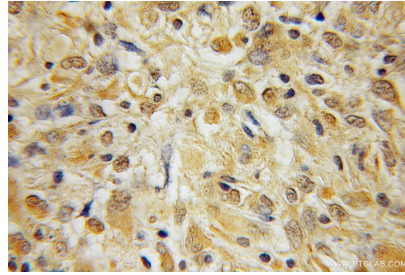
For technical support and original validation data for this product please contact:  
T: 1 (888) 4PTGLAB (1-888-478-4522) (toll free in USA), or 1(312) 455-8498 (outside USA)  
E: proteintech@ptglab.com  
W: ptglab.com

This product is exclusively available under Proteintech Group brand and is not available to purchase from any other manufacturer.

## Selected Validation Data



human brain tissue were subjected to SDS PAGE followed by western blot with 12390-1-AP (BEX1/2 antibody) at dilution of 1:500 incubated at room temperature for 1.5 hours.



Immunohistochemical analysis of paraffin-embedded human medulloblastoma using 12390-1-AP (BEX1/2 antibody) at dilution of 1:100 (under 10x lens).