

For Research Use Only

BEX1/2 Polyclonal antibody, PBS Only

Catalog Number:12390-1-PBS



Basic Information

Catalog Number: 12390-1-PBS	GenBank Accession Number: BC015522	Purification Method: Antigen affinity purification
Size: 100ug , Concentration: 1 mg/ml by Nanodrop;	GeneID (NCBI): 84707	
Source: Rabbit	UNIPROT ID: Q9BXY8	
Isotype: IgG	Full Name: brain expressed X-linked 2	
Immunogen Catalog Number: AG3066	Calculated MW: 128 aa, 15 kDa	
	Observed MW: 10-15 kDa	

Applications

Tested Applications:
WB, IHC, Indirect ELISA

Species Specificity:
human

Background Information

BEX1 is a signaling adapter molecule involved in p75NTR/NGFR signaling. It lays a role in cell cycle progression and neuronal differentiation. BEX1 inhibits neuronal differentiation in response to nerve growth factor (NGF). BEX2 is a regulator of mitochondrial apoptosis and G1 cell cycle in breast cancer. It regulates the level of PP2A regulatory subunit B and PP2A phosphatase activity. The homology between human BEX1 and BEX2 is 94%. This antibody detects both BEX1 and BEX2.

Storage

Storage:
Store at -80°C.

Storage Buffer:
PBS only, pH7.3

For technical support and original validation data for this product please contact:

T: 1 (888) 4PTGLAB (1-888-478-4522) (toll free in USA), or 1(312) 455-8498 (outside USA)

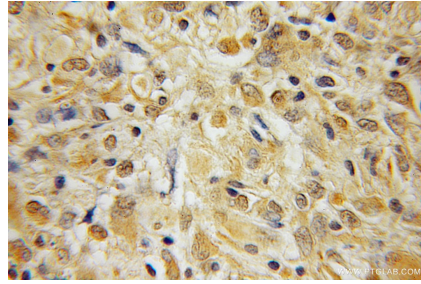
E: proteintech@ptglab.com
W: ptglab.com

This product is exclusively available under Proteintech Group brand and is not available to purchase from any other manufacturer.

Selected Validation Data



human brain tissue were subjected to SDS PAGE followed by western blot with 12390-1-AP (BEX1/2 antibody) at dilution of 1:500 incubated at room temperature for 1.5 hours. This data was developed using the same antibody clone with 12390-1-PBS in a different storage buffer formulation.



Immunohistochemical analysis of paraffin-embedded human medulloblastoma using 12390-1-AP (BEX1/2 antibody) at dilution of 1:100 (under 10x lens). This data was developed using the same antibody clone with 12390-1-PBS in a different storage buffer formulation.