

For Research Use Only

COPG Polyclonal antibody

Catalog Number: 12393-1-AP

5 Publications



Basic Information

Catalog Number:

12393-1-AP

Size:

150ul, Concentration: 350 ug/ml by Nanodrop and 133 ug/ml by Bradford method using BSA as the standard;

Source:

Rabbit

Isotype:

IgG

Immunogen Catalog Number:

AG3070

GenBank Accession Number:

BC020498

GeneID (NCBI):

22820

UNIPROT ID:

Q9Y678

Full Name:

coatamer protein complex, subunit gamma

Calculated MW:

874 aa, 98 kDa

Observed MW:

98 kDa

Purification Method:

Antigen affinity purification

Recommended Dilutions:

WB 1:5000-1:50000

IP 0.5-4.0 ug for 1.0-3.0 mg of total protein lysate

IHC 1:500-1:2000

IF/ICC 1:50-1:500

Applications

Tested Applications:

WB, IHC, IF/ICC, IP, ELISA

Cited Applications:

WB, IF, IP

Species Specificity:

human, mouse, rat

Cited Species:

human, mouse

Note-IHC: suggested antigen retrieval with TE buffer pH 9.0; (*) Alternatively, antigen retrieval may be performed with citrate buffer pH 6.0

Positive Controls:

WB : K-562 cells, A375 cells, HeLa cells, human brain tissue, human colon tissue, NIH/3T3 cells

IP : K-562 cells,

IHC : mouse kidney tissue, human breast cancer tissue

IF/ICC : HepG2 cells, HeLa cells, NIH/3T3 cells

Notable Publications

Author	Pubmed ID	Journal	Application
Mara C Harwood	36662862	Sci Adv	IP,IF,WB
Desiree M Baron	30806671	Hum Mol Genet	WB
Xiaoling Li	29475944	J Biol Chem	WB

Storage

Storage:

Store at -20°C. Stable for one year after shipment.

Storage Buffer:

PBS with 0.02% sodium azide and 50% glycerol pH 7.3.

Aliquoting is unnecessary for -20°C storage

*** 20ul sizes contain 0.1% BSA

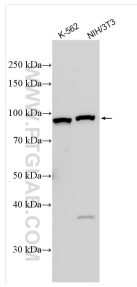
For technical support and original validation data for this product please contact:

T: 1 (888) 4PTGLAB (1-888-478-4522) (toll free in USA), or 1(312) 455-8498 (outside USA)

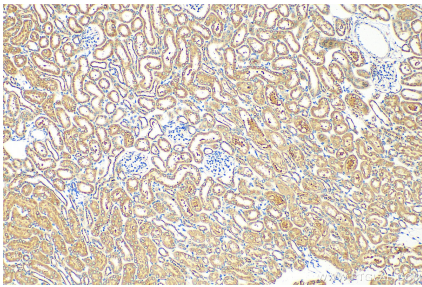
E: proteintech@ptglab.com
W: ptglab.com

This product is exclusively available under Proteintech Group brand and is not available to purchase from any other manufacturer.

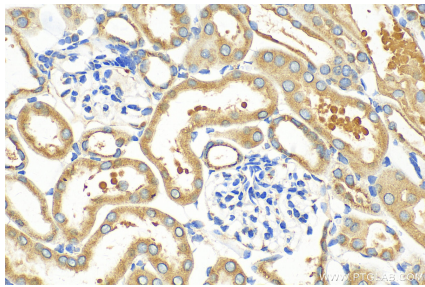
Selected Validation Data



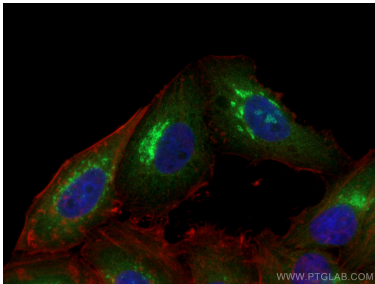
Various lysates were subjected to SDS PAGE followed by western blot with 12393-1-AP (COPG antibody) at dilution of 1:20000 incubated at room temperature for 1.5 hours.



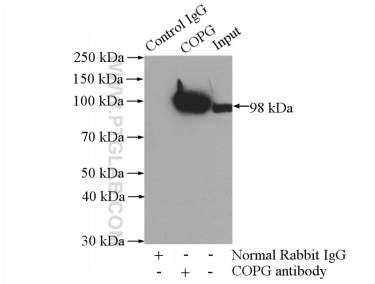
Immunohistochemical analysis of paraffin-embedded mouse kidney tissue slide using 12393-1-AP (COPG antibody) at dilution of 1:1000 (under 10x lens). Heat mediated antigen retrieval with Tris-EDTA buffer (pH 9.0).



Immunohistochemical analysis of paraffin-embedded mouse kidney tissue slide using 12393-1-AP (COPG antibody) at dilution of 1:1000 (under 40x lens). Heat mediated antigen retrieval with Tris-EDTA buffer (pH 9.0).



Immunofluorescent analysis of (4% PFA) fixed HepG2 cells using COPG antibody (12393-1-AP) at dilution of 1:200 and CoraLite®488-Conjugated AffiniPure Goat Anti-Rabbit IgG(H+L), CL594-Phalloidin (red).



IP result of anti-COPG (IP:12393-1-AP, 4ug; Detection:12393-1-AP 1:2000) with K-562 cells lysate 3600ug.