

For Research Use Only

MAGEB1 Polyclonal antibody

Catalog Number: 12400-1-AP



Basic Information

Catalog Number:

12400-1-AP

Size:

150ul, Concentration: 600 ug/ml by Nanodrop and 340 ug/ml by Bradford method using BSA as the standard;

Source:

Rabbit

Isotype:

IgG

Immunogen Catalog Number:

AG3094

GenBank Accession Number:

BC013772

GeneID (NCBI):

4112

UNIPROT ID:

P43366

Full Name:

melanoma antigen family B, 1

Calculated MW:

347 aa, 39 kDa

Observed MW:

43-45 kDa

Purification Method:

Antigen affinity purification

Recommended Dilutions:

WB 1:500-1:2000

IP 0.5-4.0 ug for 1.0-3.0 mg of total protein lysate

IF/ICC 1:200-1:800

Applications

Tested Applications:

WB, IF/ICC, IP, ELISA

Species Specificity:

human

Positive Controls:

WB : HepG2 cells, A375 cells

IP : HepG2 cells,

IF/ICC : HepG2 cells, A375 cells

Background Information

MAGEB1, also named as MAGEL1, MAGEXP, DAM10 and CT3.1, is a member of the MAGEB gene family. MAGE genes encode for tumor-rejection antigens and are expressed in tumors of different histologic types and Testis/placenta, but not in other normal tissues. The MW of MAGEB1 is about 40-45kd.

Storage

Storage:

Store at -20°C. Stable for one year after shipment.

Storage Buffer:

PBS with 0.02% sodium azide and 50% glycerol pH 7.3.

Aliquoting is unnecessary for -20°C storage

*** 20ul sizes contain 0.1% BSA

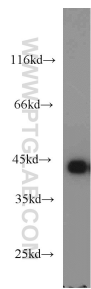
For technical support and original validation data for this product please contact:

T: 1 (888) 4PTGLAB (1-888-478-4522) (toll free in USA), or 1(312) 455-8498 (outside USA)

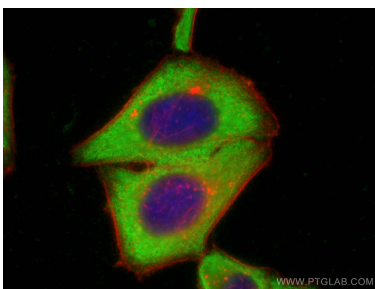
E: proteintech@ptglab.com
W: ptglab.com

This product is exclusively available under Proteintech Group brand and is not available to purchase from any other manufacturer.

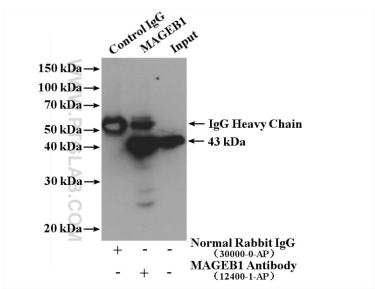
Selected Validation Data



HepG2 cells were subjected to SDS PAGE followed by western blot with 12400-1-AP (MAGEB1 antibody) at dilution of 1:2000 incubated at room temperature for 1.5 hours.



Immunofluorescent analysis of (-20°C Ethanol) fixed HepG2 cells using MAGEB1 antibody (12400-1-AP) at dilution of 1:400 and CoraLite®488-Conjugated Goat Anti-Rabbit IgG(H+L), CL594-phalloidin (red).



IP result of anti-MAGEB1 (IP:12400-1-AP, 4ug; Detection:12400-1-AP 1:2000) with HepG2 cells lysate 3360 ug.