

For Research Use Only

SGCE Polyclonal antibody

Catalog Number: 12407-1-AP **1 Publications**



Basic Information

Catalog Number: 12407-1-AP	GenBank Accession Number: BC021709	Purification Method: Antigen affinity purification
Size: 150ul , Concentration: 350 µg/ml by Nanodrop and 207 µg/ml by Bradford method using BSA as the standard;	GeneID (NCBI): 8910	Recommended Dilutions: WB 1:500-1:1000 IP 0.5-4.0 ug for IP and 1:500-1:1000 for WB
Source: Rabbit	Full Name: sarcoglycan, epsilon	IF 1:10-1:100
Isotype: IgG	Calculated MW: 437 aa, 50 kDa	
Immunogen Catalog Number: AG3118	Observed MW: 50 kDa	

Applications

Tested Applications: IF, IP, WB, ELISA	Positive Controls:
Cited Applications: WB	WB: mouse brain tissue, human brain tissue, human heart tissue, mouse heart tissue
Species Specificity: human, mouse, rat	IP: mouse heart tissue,
Cited Species: mouse	IF: HeLa cells,

Background Information

Notable Publications

Author	Pubmed ID	Journal	Application
Fumiaki Yokoi	20627944	J Biochem	WB

Storage

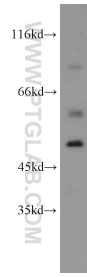
Storage:
Store at -20°C. Stable for one year after shipment.
Storage Buffer:
PBS with 0.02% sodium azide and 50% glycerol pH 7.3.
Aliquoting is unnecessary for -20°C storage

*** 20ul sizes contain 0.1% BSA

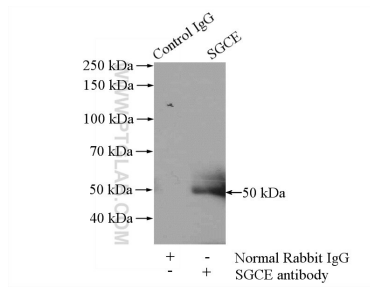
For technical support and original validation data for this product please contact:
T: 1 (888) 4PTGLAB (1-888-478-4522) (toll free in USA), or 1(312) 455-8498 (outside USA) E: proteintech@ptglab.com W: ptglab.com

This product is exclusively available under Proteintech Group brand and is not available to purchase from any other manufacturer.

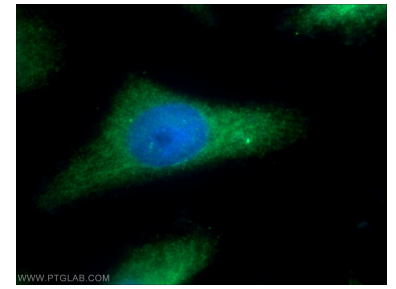
Selected Validation Data



mouse brain tissue were subjected to SDS PAGE followed by western blot with 12407-1-AP (SGCE antibody) at dilution of 1:500 incubated at room temperature for 1.5 hours.



IP Result of anti-SGCE (IP:12407-1-AP, 4 μ g; Detection:12407-1-AP 1:500) with mouse heart tissue lysate 4000 μ g.



Immunofluorescent analysis of HeLa cells using 12407-1-AP (SGCE antibody) at dilution of 1:25 and Alexa Fluor 488-conjugated AffiniPure Goat Anti-Rabbit IgG(H+L).