

For Research Use Only

APPBP2 Polyclonal antibody

Catalog Number: 12409-1-AP

1 Publications



Basic Information

Catalog Number: 12409-1-AP	GenBank Accession Number: BC018121	Purification Method: Antigen affinity purification
Size: 150ul , Concentration: 300 µg/ml by Nanodrop;	GeneID (NCBI): 10513	Recommended Dilutions: WB 1:1000-1:6000 IHC 1:50-1:500
Source: Rabbit	Full Name: amyloid beta precursor protein (cytoplasmic tail) binding protein 2	
Isotype: IgG	Calculated MW: 585 aa, 67 kDa	
Immunogen Catalog Number: AG3092	Observed MW: 67 kDa	

Applications

Tested Applications: IHC, WB, ELISA	Positive Controls: WB : A2780 cells, HeLa cells, Jurkat cells IHC : human breast cancer tissue,
Cited Applications: WB	
Species Specificity: human	
Cited Species: mouse	

Note-IHC: suggested antigen retrieval with TE buffer pH 9.0; (*) Alternatively, antigen retrieval may be performed with citrate buffer pH 6.0

Background Information

Amyloid proteinbinding protein 2 (APPBP2) is a hydrophilic tubulin that interacts with microtubules and is functionally involved in beta-amyloid precursor protein (APP) transport and/or processing. Based on the regulation of microtubules and APP, APPBP2 is found to be involved in the oncogenesis of various types of cancers, such as breast cancer, ovarian clear cell adenocarcinomas, desmoplastic medulloblastomas and neuroblastomas. Recently, Studies have demonstrated that APPBP2 is a potential target for diagnosis and therapeutic intervention in non-small cell lung cancer (NSCLC) (PMID: 31105033).

Notable Publications

Author	Pubmed ID	Journal	Application
Yi Zhong	37216643	Diabetes	WB

Storage

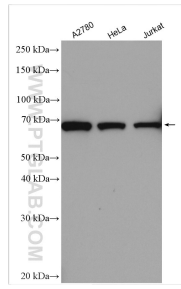
Storage:
Store at -20°C. Stable for one year after shipment.
Storage Buffer:
PBS with 0.02% sodium azide and 50% glycerol pH 7.3.
Aliquoting is unnecessary for -20°C storage

*** 20ul sizes contain 0.1% BSA

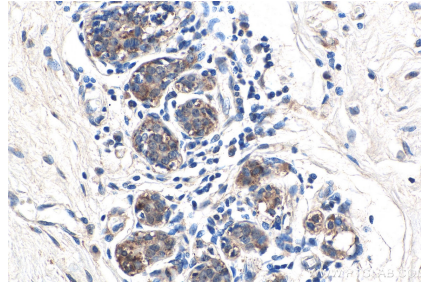
For technical support and original validation data for this product please contact:
T: 1 (888) 4PTGLAB (1-888-478-4522) (toll free in USA), or 1(312) 455-8498 (outside USA)
E: proteintech@ptglab.com
W: ptglab.com

This product is exclusively available under Proteintech Group brand and is not available to purchase from any other manufacturer.

Selected Validation Data



Various lysates were subjected to SDS PAGE followed by western blot with 12409-1-AP (APPBP2 antibody) at dilution of 1:3000 incubated at room temperature for 1.5 hours.



Immunohistochemical analysis of paraffin-embedded human breast cancer tissue slide using 12409-1-AP (APPBP2 antibody) at dilution of 1:200 (under 40x Lens). Heat mediated antigen retrieval with Tris-EDTA buffer (pH 9.0). Chromogenic substrates are DAB/H₂O₂ and CuSO₄.