

For Research Use Only

# EDF1 Polyclonal antibody

Catalog Number: 12419-1-AP

Featured Product

3 Publications



## Basic Information

<b>Catalog Number:</b> 12419-1-AP	<b>GenBank Accession Number:</b> BC015500	<b>Purification Method:</b> Antigen affinity purification
<b>Size:</b> 150ul , Concentration: 900 µg/ml by Nanodrop;	<b>GeneID (NCBI):</b> 8721	<b>Recommended Dilutions:</b> WB 1:500-1:3000 IP 0.5-4.0 ug for 1.0-3.0 mg of total protein lysate IHC 1:20-1:200
<b>Source:</b> Rabbit	<b>Full Name:</b> endothelial differentiation-related factor 1	
<b>Isotype:</b> IgG	<b>Calculated MW:</b> 148 aa, 16 kDa	
<b>Immunogen Catalog Number:</b> AG3063	<b>Observed MW:</b> 18-20 kDa	

## Applications

**Tested Applications:**  
IHC, IP, WB, ELISA

**Cited Applications:**  
IP, WB

**Species Specificity:**  
human, mouse

**Cited Species:**  
human, mouse

**Note-IHC: suggested antigen retrieval with TE buffer pH 9.0; (\*) Alternatively, antigen retrieval may be performed with citrate buffer pH 6.0**

**Positive Controls:**

**WB:** Jurkat cells, A549 cells, mouse pancreas tissue

**IP:** Jurkat cells,

**IHC:** human prostate cancer tissue,

## Background Information

### Notable Publications

Author	Pubmed ID	Journal	Application
Xu-Yun Zhao	30061575	Nat Commun	WB, IP
Matthias Höllerhage	35481270	Front Neurol	WB
Shiyu Luo	37905068	bioRxiv	WB

## Storage

**Storage:**

Store at -20°C. Stable for one year after shipment.

**Storage Buffer:**

PBS with 0.02% sodium azide and 50% glycerol pH 7.3.

Aliquoting is unnecessary for -20°C storage

\*\*\* 20ul sizes contain 0.1% BSA

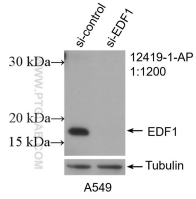
For technical support and original validation data for this product please contact:

T: 1 (888) 4PTGLAB (1-888-478-4522) (toll free in USA), or 1(312) 455-8498 (outside USA)

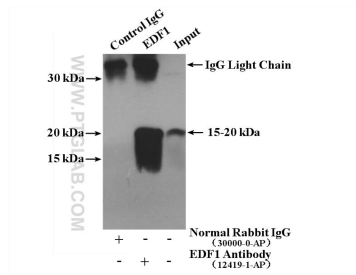
E: proteintech@ptglab.com  
W: ptglab.com

This product is exclusively available under Proteintech Group brand and is not available to purchase from any other manufacturer.

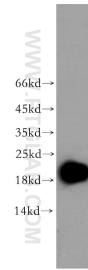
## Selected Validation Data



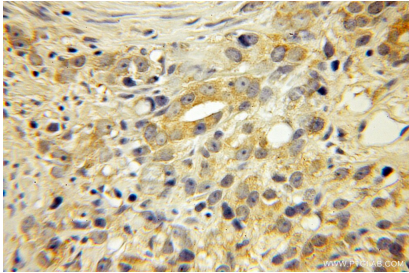
WB result of EDF1 antibody (12419-1-AP; 1:1200; incubated at room temperature for 1.5 hours) with sh-Control and sh-EDF1 transfected A549 cells.



IP result of anti-EDF1 (IP:12419-1-AP, 4 $\mu$ g; Detection:12419-1-AP 1:500) with Jurkat cells lysate 2920  $\mu$ g.



Jurkat cells were subjected to SDS PAGE followed by western blot with 12419-1-AP (EDF1 antibody) at dilution of 1:500 incubated at room temperature for 1.5 hours.



Immunohistochemical analysis of paraffin-embedded human prostate cancer using 12419-1-AP (EDF1 antibody) at dilution of 1:50 (under 10x lens).