

For Research Use Only

Septin 10 Polyclonal antibody

Catalog Number: 12420-1-AP



Basic Information

| | | |
|--|--|---|
| Catalog Number: 12420-1-AP | GenBank Accession Number: BC020502 | Purification Method: Antigen affinity purification |
| Size: 150ul , Concentration: 400 µg/ml by Nanodrop and 300 µg/ml by Bradford method using BSA as the standard; | GeneID (NCBI): 151011 | Recommended Dilutions: WB 1:500-1:1000 IHC 1:20-1:200 IF 1:50-1:500 |
| Source: Rabbit | Full Name: septin 10 | |
| Isotype: IgG | Calculated MW: 53 kDa, 57 kDa | |
| Immunogen Catalog Number: AG3071 | Observed MW: 53-57 kDa | |

Applications

Tested Applications:

IF, IHC, WB, ELISA

Species Specificity:

human, mouse, rat

Note-IHC: suggested antigen retrieval with TE buffer pH 9.0; (*) Alternatively, antigen retrieval may be performed with citrate buffer pH 6.0

Positive Controls:

WB : human kidney tissue, HeLa cells

IHC : human pancreas cancer tissue,

IF : HepG2 cells,

Background Information

Storage

Storage:

Store at -20°C. Stable for one year after shipment.

Storage Buffer:

PBS with 0.02% sodium azide and 50% glycerol pH 7.3.

Aliquoting is unnecessary for -20°C storage

*** 20ul sizes contain 0.1% BSA

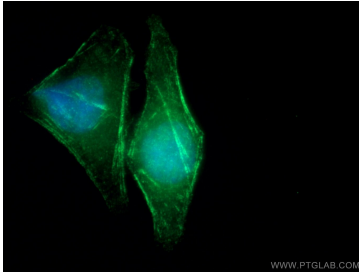
For technical support and original validation data for this product please contact:

T: 1 (888) 4PTGLAB (1-888-478-4522) (toll free in USA), or 1(312) 455-8498 (outside USA)

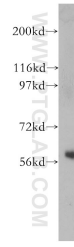
E: proteintech@ptglab.com
W: ptglab.com

This product is exclusively available under Proteintech Group brand and is not available to purchase from any other manufacturer.

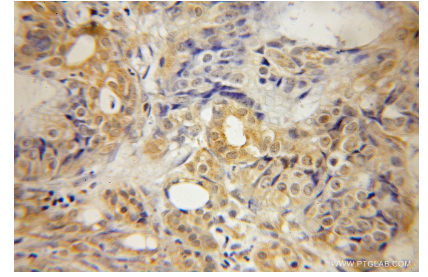
Selected Validation Data



Immunofluorescent analysis of (-20°C Ethanol) fixed HepG2 cells using 12420-1-AP (Septin 10 antibody) at dilution of 1:50 and Alexa Fluor 488-conjugated AffiniPure Goat Anti-Rabbit IgG(H+L).



human kidney tissue were subjected to SDS PAGE followed by western blot with 12420-1-AP (Septin 10 antibody) at dilution of 1:800 incubated at room temperature for 1.5 hours.



Immunohistochemical analysis of paraffin-embedded human pancreas cancer using 12420-1-AP (Septin 10 antibody) at dilution of 1:50 (under 10x lens).