

For Research Use Only

MAGEH1 Polyclonal antibody

Catalog Number: 12424-1-AP **1 Publications**



Basic Information

Catalog Number: 12424-1-AP	GenBank Accession Number: BC011954	Purification Method: Antigen affinity purification
Size: 150ul , Concentration: 500 µg/ml by Nanodrop and 313 µg/ml by Bradford method using BSA as the standard;	GeneID (NCBI): 28986	Recommended Dilutions: WB 1:500-1:1000 IHC 1:20-1:200 IF 1:50-1:500
Source: Rabbit	Full Name: melanoma antigen family H, 1	
Isotype: IgG	Calculated MW: 219 aa, 24 kDa	
Immunogen Catalog Number: AG3090	Observed MW: 28 kDa	

Applications

Tested Applications: IF, IHC, WB, ELISA	Positive Controls: WB : Y79 cells, mouse brain tissue, PC-3 cells IHC : human prostate cancer tissue, IF : PC-3 cells,
Cited Applications: WB	
Species Specificity: human, mouse, rat	
Cited Species: rat	

Note-IHC: suggested antigen retrieval with TE buffer pH 9.0; (*) Alternatively, antigen retrieval may be performed with citrate buffer pH 6.0

Background Information

Notable Publications

Author	Pubmed ID	Journal	Application
Yichen Zhao	35509834	Oxid Med Cell Longev	WB

Storage

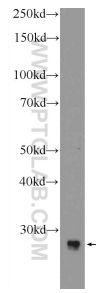
Storage:
Store at -20°C. Stable for one year after shipment.
Storage Buffer:
PBS with 0.02% sodium azide and 50% glycerol pH 7.3.
Aliquoting is unnecessary for -20°C storage

*** 20ul sizes contain 0.1% BSA

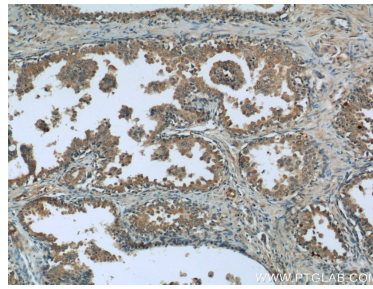
For technical support and original validation data for this product please contact:
T: 1 (888) 4PTGLAB (1-888-478-4522) (toll free in USA), or 1(312) 455-8498 (outside USA) E: proteintech@ptglab.com W: ptglab.com

This product is exclusively available under Proteintech Group brand and is not available to purchase from any other manufacturer.

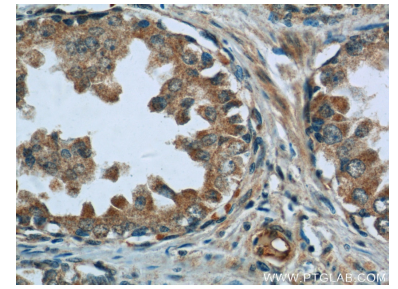
Selected Validation Data



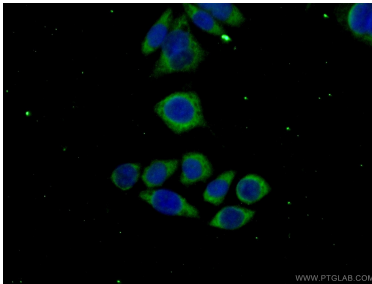
Y79 cells were subjected to SDS PAGE followed by western blot with 12424-1-AP (MAGEH1 Antibody) at dilution of 1:600 incubated at room temperature for 1.5 hours.



Immunohistochemical analysis of paraffin-embedded human prostate cancer tissue slide using 12424-1-AP (MAGEH1 Antibody) at dilution of 1:50 (under 10x lens).



Immunohistochemical analysis of paraffin-embedded human prostate cancer tissue slide using 12424-1-AP (MAGEH1 Antibody) at dilution of 1:50 (under 40x lens).



Immunofluorescent analysis of (-20°C Ethanol) fixed PC-3 cells using 12424-1-AP (MAGEH1 antibody) at dilution of 1:50 and Alexa Fluor 488-conjugated AffiniPure Goat Anti-Rabbit IgG(H+L).