

For Research Use Only

GLYCTK Polyclonal antibody

Catalog Number: 12426-1-AP



Basic Information

Catalog Number:

12426-1-AP

Size:

150ul , Concentration: 400 ug/ml by Nanodrop and 187 ug/ml by Bradford method using BSA as the standard;

Source:

Rabbit

Isotype:

IgG

Immunogen Catalog Number:

AG3097

GenBank Accession Number:

BC021896

GeneID (NCBI):

132158

UNIPROT ID:

Q8IVS8

Full Name:

glycerate kinase

Calculated MW:

523 aa, 55 kDa

Observed MW:

55 kDa

Purification Method:

Antigen affinity purification

Recommended Dilutions:

WB 1:1000-1:4000

IHC 1:20-1:200

IF/ICC 1:200-1:800

Applications

Tested Applications:

WB, IHC, IF/ICC, ELISA

Species Specificity:

human, mouse, rat

Note-IHC: suggested antigen retrieval with TE buffer pH 9.0; (*) Alternatively, antigen retrieval may be performed with citrate buffer pH 6.0

Positive Controls:

WB : human lung tissue, human liver tissue

IHC : human pancreas cancer tissue,

IF/ICC : HeLa cells,

Storage

Storage:

Store at -20°C. Stable for one year after shipment.

Storage Buffer:

PBS with 0.02% sodium azide and 50% glycerol pH 7.3.

Aliquoting is unnecessary for -20°C storage

*** 20ul sizes contain 0.1% BSA

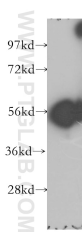
For technical support and original validation data for this product please contact:

T: 1 (888) 4PTGLAB (1-888-478-4522) (toll free in USA), or 1(312) 455-8498 (outside USA)

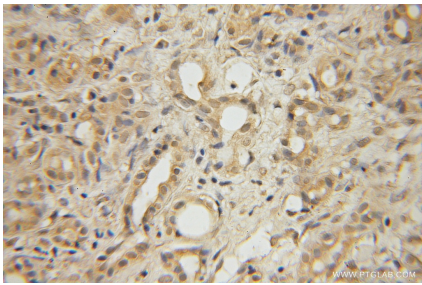
E: proteintech@ptglab.com
W: ptglab.com

This product is exclusively available under Proteintech Group brand and is not available to purchase from any other manufacturer.

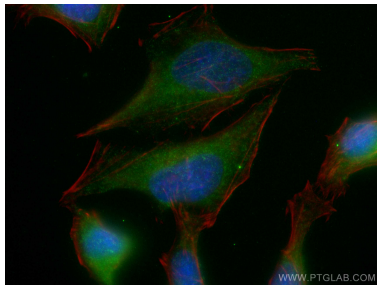
Selected Validation Data



human lung tissue were subjected to SDS PAGE followed by western blot with 12426-1-AP (GLYCK antibody) at dilution of 1:400 incubated at room temperature for 1.5 hours.



Immunohistochemical analysis of paraffin-embedded human pancreas cancer using 12426-1-AP (GLYCK antibody) at dilution of 1:50 (under 10x lens).



Immunofluorescent analysis of (-20°C Ethanol) fixed HeLa cells using GLYCK antibody (12426-1-AP) at dilution of 1:400 and CoraLite®488-Conjugated Goat Anti-Rabbit IgG(H+L), CL594-Phalloidin (red).