

For Research Use Only

SHC3 Polyclonal antibody

Catalog Number: 12436-1-AP **2 Publications**



Basic Information

Catalog Number: 12436-1-AP	GenBank Accession Number: BC026314	Purification Method: Antigen affinity purification
Size: 150ul , Concentration: 600 µg/ml by Nanodrop and 333 µg/ml by Bradford method using BSA as the standard;	GeneID (NCBI): 53358	Recommended Dilutions: WB 1:500-1:2000 IP 0.5-4.0 ug for IP and 1:200-1:1000 for WB
Source: Rabbit	Full Name: SHC (Src homology 2 domain containing) transforming protein 3	Calculated MW: 594 aa, 64 kDa
Isotype: IgG	Observed MW: 50-52 kDa	Immunogen Catalog Number: AG3115

Applications

Tested Applications: IHC, IP, WB, ELISA	Positive Controls: WB : BxPC-3 cells, IP : BxPC-3 cells, IHC : mouse pancreas tissue,
Cited Applications: IHC, WB	
Species Specificity: human, mouse	
Cited Species: human, mouse	
Note-IHC: suggested antigen retrieval with TE buffer pH 9.0; (*) Alternatively, antigen retrieval may be performed with citrate buffer pH 6.0	

Background Information

Notable Publications

Author	Pubmed ID	Journal	Application
Mark Sevecka	21296872	Mol Cell Proteomics	WB
Xiang Xu Kong	37483310	J Hepatocell Carcinoma	IHC

Storage

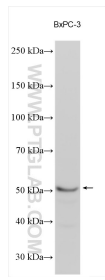
Storage:
Store at -20°C. Stable for one year after shipment.
Storage Buffer:
PBS with 0.02% sodium azide and 50% glycerol pH 7.3.
Aliquoting is unnecessary for -20°C storage

*** 20ul sizes contain 0.1% BSA

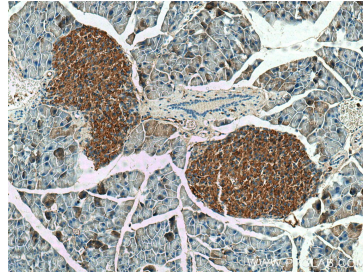
For technical support and original validation data for this product please contact:
T: 1 (888) 4PTGLAB (1-888-478-4522) (toll free in USA), or 1(312) 455-8498 (outside USA)
E: proteintech@ptglab.com
W: ptglab.com

This product is exclusively available under Proteintech Group brand and is not available to purchase from any other manufacturer.

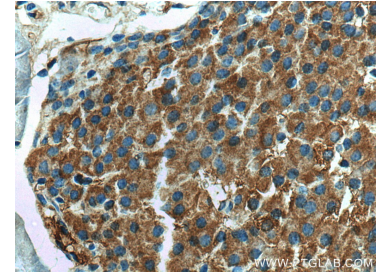
Selected Validation Data



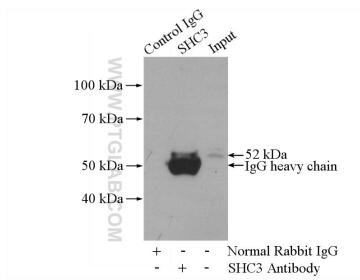
BxPC-3 cells were subjected to SDS PAGE followed by western blot with 12436-1-AP (SHC3 antibody) at dilution of 1:1500 incubated at room temperature for 1.5 hours.



Immunohistochemical analysis of paraffin-embedded mouse pancreas tissue slide using 12436-1-AP (SHC3 antibody) at dilution of 1:200 (under 10x lens). Heat mediated antigen retrieval with Tris-EDTA buffer (pH 9.0).



Immunohistochemical analysis of paraffin-embedded mouse pancreas tissue slide using 12436-1-AP (SHC3 antibody) at dilution of 1:200 (under 40x lens). Heat mediated antigen retrieval with Tris-EDTA buffer (pH 9.0).



IP Result of anti-SHC3 (IP:12436-1-AP, 4ug; Detection:12436-1-AP 1:300) with BxPC-3 cells lysate 2800ug.