

For Research Use Only

CREST Polyclonal antibody, PBS Only

Catalog Number: 12439-1-PBS

Featured Product



Basic Information

Catalog Number:

12439-1-PBS

Size:

100ug, Concentration: 1 mg/ml by Nanodrop;

Source:

Rabbit

Isotype:

IgG

Immunogen Catalog Number:

AG3119

GenBank Accession Number:

BC034494

GeneID (NCBI):

26039

UNIPROT ID:

O75177

Full Name:

synovial sarcoma translocation gene on chromosome 18-like 1

Calculated MW:

396 aa, 43 kDa

Observed MW:

55 kDa

Purification Method:

Antigen affinity purification

Applications

Tested Applications:

WB, IHC, IF/ICC, IF-P, IP, ELISA

Species Specificity:

human, mouse, rat

Background Information

CREST, also named as SS18-like 1 (SS18L1) is a transcriptional activator that is required for calcium-dependent dendritic growth and branching in cortical neurons. It's also a nuclear protein interacts with CREB-binding protein and expressed in the developing brain. It helps regulate neuronal morphogenesis in calcium-dependent manner. The N-terminal domain of SS18L1 is required for suppressing transactivation in the basal state, while the C-terminal domain is required for calcium-induced transactivation. It's part of the CREST-BRG1 complex, a multiprotein complex that regulates promoter activation by orchestrating a calcium-dependent release of a repressor complex and a recruitment of an activator complex. This complex also binds to the NR2B promoter, and activity-dependent induction of NR2B expression involves a release of HDAC1 and recruitment of CREBBP. The calculated molecular weight of CREST is about 43 kDa, but the modified of CREST protein is 55 kDa (PMID: 25888396). CREST exists some isoforms with calculated MV 43, 40, 33 and 29 kDa.

Storage

Storage:

Store at -80°C.

Storage Buffer:

PBS only, pH7.3

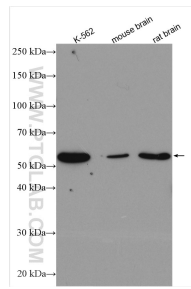
For technical support and original validation data for this product please contact:

T: 1 (888) 4PTGLAB (1-888-478-4522) (toll free in USA), or 1(312) 455-8498 (outside USA)

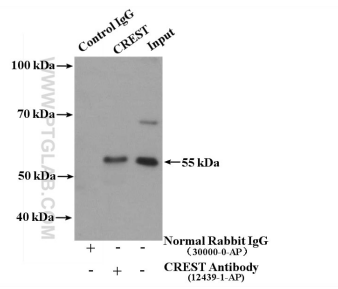
E: proteintech@ptglab.com
W: ptglab.com

This product is exclusively available under Proteintech Group brand and is not available to purchase from any other manufacturer.

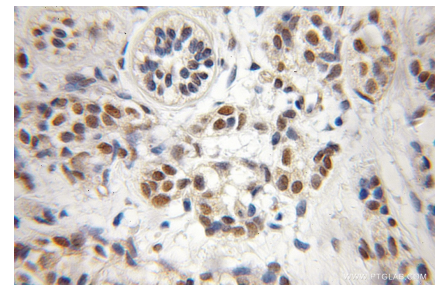
Selected Validation Data



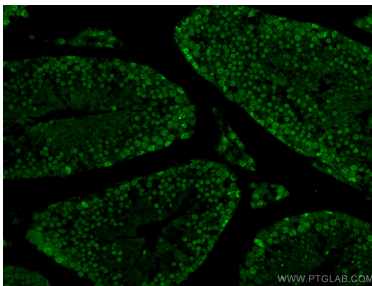
Various lysates were subjected to SDS PAGE followed by western blot with 12439-1-AP (CREST antibody) at dilution of 1:3000 incubated at room temperature for 1.5 hours. This data was developed using the same antibody clone with 12439-1-PBS in a different storage buffer formulation.



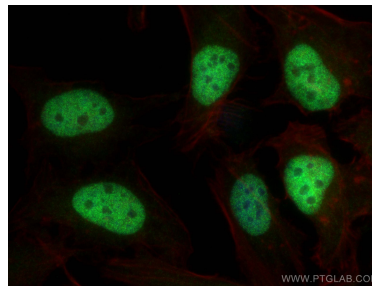
IP result of anti-CREST (IP:12439-1-AP, 4ug; Detection:12439-1-AP 1:300) with HeLa cells lysate 3000 ug. This data was developed using the same antibody clone with 12439-1-PBS in a different storage buffer formulation.



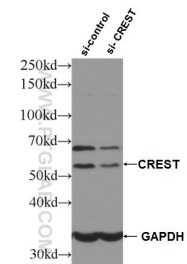
Immunohistochemical analysis of paraffin-embedded human breast cancer using 12439-1-AP (CREST antibody) at dilution of 1:50 (under 10x lens). This data was developed using the same antibody clone with 12439-1-PBS in a different storage buffer formulation.



Immunofluorescent analysis of (4% PFA) fixed mouse testis tissue using 12439-1-AP (CREST antibody) at dilution of 1:100 and CoraLite488-Conjugated AffiniPure Goat Anti-Rabbit IgG(H+L). This data was developed using the same antibody clone with 12439-1-PBS in a different storage buffer formulation.



Immunofluorescent analysis of (4% PFA) fixed HeLa cells using CREST antibody (12439-1-AP) at dilution of 1:800 and CoraLite@488-Conjugated AffiniPure Goat Anti-Rabbit IgG(H+L), (CL594-Phalloidin, red). This data was developed using the same antibody clone with 12439-1-PBS in a different storage buffer formulation.



WB result of CREST antibody (12439-1-AP; 1:4000; incubated at room temperature for 1.5 hours) with sh-Control and sh-CREST transfected HeLa cells. This data was developed using the same antibody clone with 12439-1-PBS in a different storage buffer formulation.