

For Research Use Only

# SHPK Polyclonal antibody

Catalog Number: 12441-1-AP



## Basic Information

<b>Catalog Number:</b> 12441-1-AP	<b>GenBank Accession Number:</b> BC020543	<b>Purification Method:</b> Antigen affinity purification
<b>Size:</b> 150ul , Concentration: 180 µg/ml by Nanodrop and 133 µg/ml by Bradford method using BSA as the standard;	<b>GeneID (NCBI):</b> 23729	<b>Recommended Dilutions:</b> WB 1:500-1:1000 IHC 1:20-1:200
<b>Source:</b> Rabbit	<b>Full Name:</b> sedoheptulokinase	
<b>Isotype:</b> IgG	<b>Calculated MW:</b> 478 aa, 52 kDa	
<b>Immunogen Catalog Number:</b> AG3150	<b>Observed MW:</b> 52 kDa	

## Applications

<b>Tested Applications:</b> IHC, WB, ELISA	<b>Positive Controls:</b>
<b>Species Specificity:</b> human, mouse, rat	<b>WB :</b> MDA-MB-231 cells, RAW 264.7 cells, mouse heart tissue
<b>Note-IHC: suggested antigen retrieval with TE buffer pH 9.0; (*) Alternatively, antigen retrieval may be performed with citrate buffer pH 6.0</b>	<b>IHC :</b> human prostate cancer tissue,

## Background Information

SHPK, also named CARKL, is a carbohydrate kinase involved in the phosphorylation of sugars as they enter a cell, inhibiting return across the cell membrane (PubMed: 10673275). SHPK is a sedoheptulose kinase of the pentose phosphate pathway. It acts as a modulator of macrophage activation through control of glucose metabolism (PMID: 22682222).

## Storage

**Storage:**  
Store at -20°C. Stable for one year after shipment.  
**Storage Buffer:**  
PBS with 0.02% sodium azide and 50% glycerol pH 7.3.  
Aliquoting is unnecessary for -20°C storage

\*\*\* 20ul sizes contain 0.1% BSA

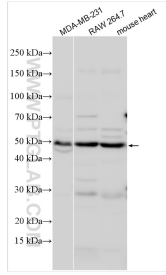
For technical support and original validation data for this product please contact:

T: 1 (888) 4PTGLAB (1-888-478-4522) (toll free in USA), or 1(312) 455-8498 (outside USA)

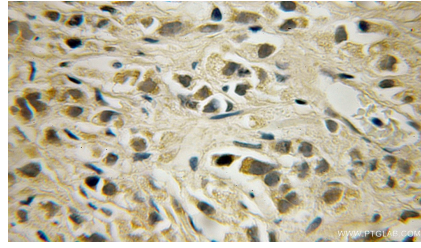
E: [proteintech@ptglab.com](mailto:proteintech@ptglab.com)  
W: [ptglab.com](http://ptglab.com)

This product is exclusively available under Proteintech Group brand and is not available to purchase from any other manufacturer.

## Selected Validation Data



Various lysates were subjected to SDS PAGE followed by western blot with 12441-1-AP (SHPK antibody) at dilution of 1:800 incubated at room temperature for 1.5 hours.



Immunohistochemical analysis of paraffin-embedded human prostate cancer using 12441-1-AP (SHPK antibody) at dilution of 1:50 (under 10x lens).