

# PDE1A Polyclonal antibody

Catalog Number: 12442-2-AP

Featured Product

5 Publications

## Basic Information

## Catalog Number:

12442-2-AP

## Size:

150ul, Concentration: 700 µg/ml by Nanodrop;

## Source:

Rabbit

## Isotype:

IgG

## Immunogen Catalog Number:

AG3157

## GenBank Accession Number:

BC022480

## GeneID (NCBI):

5136

## Full Name:

phosphodiesterase 1A, calmodulin-dependent

## Calculated MW:

545 aa, 61 kDa

## Observed MW:

61 kDa

## Purification Method:

Antigen affinity purification

## Recommended Dilutions:

WB 1:1000-1:6000

IP 0.5-4.0 µg for IP and 1:500-1:2000

for WB

IHC 1:50-1:500

## Applications

## Tested Applications:

IHC, IP, WB, ELISA

## Cited Applications:

IHC, WB

## Species Specificity:

human, mouse, rat

## Cited Species:

human, mouse

## Positive Controls:

WB: mouse brain tissue, human brain tissue, rat brain tissue

IP: mouse brain tissue,

IHC: mouse brain tissue, human gliomas tissue

**Note-IHC: suggested antigen retrieval with TE buffer pH 9.0; (\*) Alternatively, antigen retrieval may be performed with citrate buffer pH 6.0**

## Background Information

PDE1A (Calcium/calmodulin-dependent 3',5'-cyclic nucleotide phosphodiesterase 1A) is also named as Cam-PDE 1A, 61 kDa Cam-PDE, hCam-1 and belongs to the cyclic nucleotide phosphodiesterase (PDEs) family. The PDEs play a role in signal transduction by regulating intracellular cyclic nucleotide concentrations through hydrolysis of cAMP and/or cGMP to their respective nucleoside 5-prime monophosphates. This protein has 9 isoforms produced by alternative splicing with the molecular weight from 57 kDa to 63 kDa. There is a report showing the major 67-kD PDE1A isoform identified in human sperm associates tightly with calmodulin and is not activated by Ca(2+)/calmodulin (PMID:12135876).

## Notable Publications

Author	Pubmed ID	Journal	Application
Jeremy R Egbert	31087036	Biol Reprod	WB
Jeremy R Egbert	27009040	Biol Reprod	
Xiaofang Wang	28750036	PLoS One	WB

## Storage

## Storage:

Store at -20°C. Stable for one year after shipment.

## Storage Buffer:

PBS with 0.02% sodium azide and 50% glycerol pH 7.3.

Aliquoting is unnecessary for -20°C storage

\*\*\* 20ul sizes contain 0.1% BSA

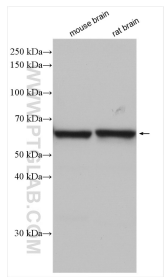
For technical support and original validation data for this product please contact:

T: 1 (888) 4PTGLAB (1-888-478-4522) (toll free in USA), or 1(312) 455-8498 (outside USA)

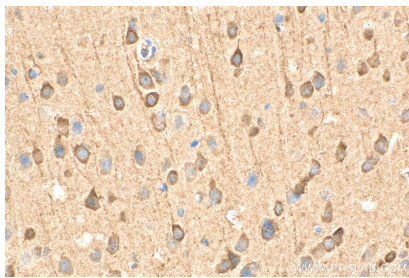
E: [proteintech@ptglab.com](mailto:proteintech@ptglab.com)  
W: [ptglab.com](http://ptglab.com)

This product is exclusively available under Proteintech Group brand and is not available to purchase from any other manufacturer.

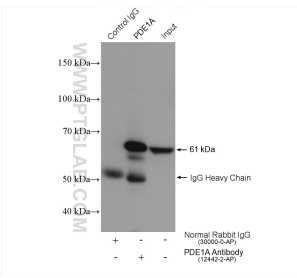
Selected Validation Data



Various lysates were subjected to SDS PAGE followed by western blot with 12442-2-AP (PDE1A antibody) at dilution of 1:3000 incubated at room temperature for 1.5 hours.



Immunohistochemical analysis of paraffin-embedded mouse brain tissue slide using 12442-2-AP (PDE1A antibody) at dilution of 1:200 (under 40x lens). Heat mediated antigen retrieval with Tris-EDTA buffer (pH 9.0).



IP result of anti-PDE1A(IP:12442-2-AP, 4ug; Detection:12442-2-AP 1:1000) with mouse brain tissue lysate 2080 ug.