

For Research Use Only

HS2ST1 Polyclonal antibody

Catalog Number: 12453-1-AP **1 Publications**



Basic Information

Catalog Number: 12453-1-AP	GenBank Accession Number: BC025990	Purification Method: Antigen affinity purification
Size: 150ul , Concentration: 350 µg/ml by Nanodrop and 267 µg/ml by Bradford method using BSA as the standard;	GeneID (NCBI): 9653	Recommended Dilutions: WB 1:500-1:2400 IHC 1:20-1:200
Source: Rabbit	Full Name: heparan sulfate 2-O-sulfotransferase 1	
Isotype: IgG	Calculated MW: 229 aa, 27 kDa	
Immunogen Catalog Number: AG3111	Observed MW: 27 kDa	

Applications

Tested Applications: IHC, WB, ELISA	Positive Controls: WB : human liver tissue, human brain tissue, human heart tissue, PC-3 cells IHC : human lymphoma tissue,
Cited Applications: IHC	
Species Specificity: human	
Cited Species: human	

Note-IHC: suggested antigen retrieval with TE buffer pH 9.0; (*) Alternatively, antigen retrieval may be performed with citrate buffer pH 6.0

Background Information

Notable Publications

Author	Pubmed ID	Journal	Application
Guozhi Yang	36086752	Medicine (Baltimore)	IHC

Storage

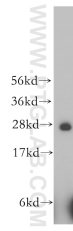
Storage:
Store at -20°C. Stable for one year after shipment.
Storage Buffer:
PBS with 0.02% sodium azide and 50% glycerol pH 7.3.
Aliquoting is unnecessary for -20°C storage

*** 20ul sizes contain 0.1% BSA

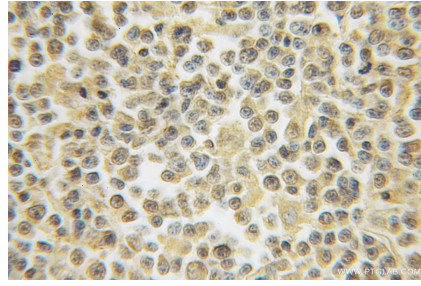
For technical support and original validation data for this product please contact:
T: 1 (888) 4PTGLAB (1-888-478-4522) (toll free in USA), or 1(312) 455-8498 (outside USA) E: proteintech@ptglab.com W: ptglab.com

This product is exclusively available under Proteintech Group brand and is not available to purchase from any other manufacturer.

Selected Validation Data



human liver tissue were subjected to SDS PAGE followed by western blot with 12453-1-AP (HS2ST1 antibody) at dilution of 1:500 incubated at room temperature for 1.5 hours.



Immunohistochemical analysis of paraffin-embedded human lymphoma using 12453-1-AP (HS2ST1 antibody) at dilution of 1:50 (under 10x lens).