

For Research Use Only

EPS8 Polyclonal antibody

Catalog Number: 12455-1-AP

Featured Product

2 Publications



Basic Information

Catalog Number: 12455-1-AP	GenBank Accession Number: BC030010	Purification Method: Antigen affinity purification
Size: 150ul, Concentration: 800 µg/ml by Nanodrop and 487 µg/ml by Bradford method using BSA as the standard;	GeneID (NCBI): 2059	Recommended Dilutions: WB 1:500-1:2000 IP 0.5-4.0 ug for IP and 1:500-1:1000 for WB
Source: Rabbit	Full Name: epidermal growth factor receptor pathway substrate 8	IHC 1:50-1:500 IF 1:10-1:100
Isotype: IgG	Calculated MW: 822 aa, 92 kDa	
Immunogen Catalog Number: AG3121	Observed MW: 97 kDa	

Applications

Tested Applications: IF, IHC, IP, WB, ELISA	Positive Controls: WB : HEK-293T cells, HeLa cells
Cited Applications: IHC, WB	IP: HeLa cells,
Species Specificity: human	IHC: human breast cancer tissue,
Cited Species: human	IF: A375 cells,

Note-IHC: suggested antigen retrieval with TE buffer pH 9.0; (*) Alternatively, antigen retrieval may be performed with citrate buffer pH 6.0

Background Information

Epidermal growth factor receptor Pathway Substrate 8 (EPS8) is a crucial regulator of the actin cytoskeleton dynamics accompanying cell motility and invasion. This protein contains one PH domain and one SH3 domain leading to its binding activity with multiple cellular targets. EPS8 can function as a unique actin capping protein specifically required for dendritic cell migration and plays roles in the regulation of axonal filopodia in neuronal development and synapse formation. The EPS8 gene may contribute to the development of a subset of colorectal cancers and could have applications in diagnosis and treatment.

Notable Publications

Author	Pubmed ID	Journal	Application
Mingzhu Tan	34391775	Exp Cell Res	IHC,WB
Jieyun Zhang	32147678	Acta Biochim Biophys Sin (Shanghai)	WB

Storage

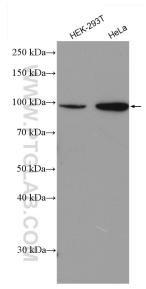
Storage:
Store at -20°C. Stable for one year after shipment.
Storage Buffer:
PBS with 0.02% sodium azide and 50% glycerol pH 7.3.
Aliquoting is unnecessary for -20°C storage

*** 20ul sizes contain 0.1% BSA

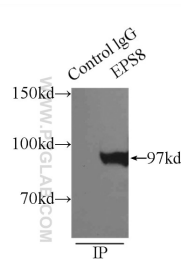
For technical support and original validation data for this product please contact:
T: 1 (888) 4PTGLAB (1-888-478-4522) (toll free in USA), or 1(312) 455-8498 (outside USA) E: proteintech@ptglab.com W: ptglab.com

This product is exclusively available under Proteintech Group brand and is not available to purchase from any other manufacturer.

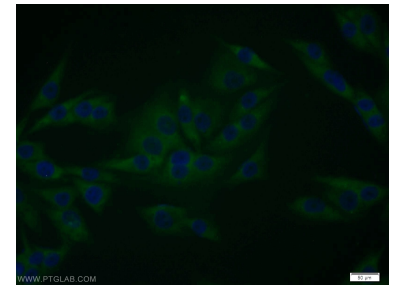
Selected Validation Data



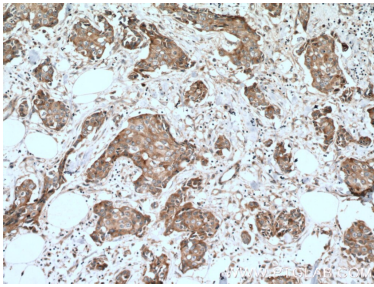
Various lysates were subjected to SDS PAGE followed by western blot with 12455-1-AP (EPS8 antibody) at dilution of 1:1000 incubated at room temperature for 1.5 hours.



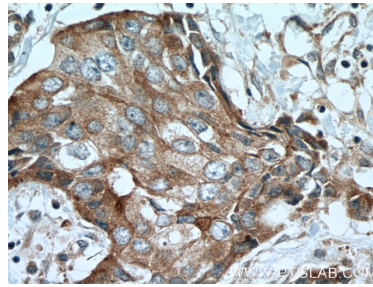
IP Result of anti-EPS8 (IP:12455-1-AP, 3ug; Detection:12455-1-AP 1:500) with HeLa cells lysate 3800ug.



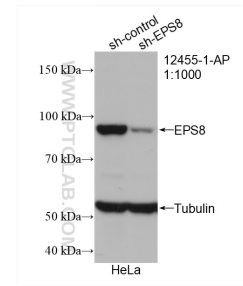
Immunofluorescent analysis of A375 cells using 12455-1-AP (EPS8 antibody) at dilution of 1:25 and Alexa Fluor 488-conjugated AffiniPure Goat Anti-Rabbit IgG(H+L).



Immunohistochemical analysis of paraffin-embedded human breast cancer tissue slide using 12455-1-AP (EPS8 antibody) at dilution of 1:100 (under 10x lens. Heat mediated antigen retrieval with Tris-EDTA buffer (pH 9.0).



Immunohistochemical analysis of paraffin-embedded human breast cancer tissue slide using 12455-1-AP (EPS8 antibody) at dilution of 1:100 (under 40x lens. Heat mediated antigen retrieval with Tris-EDTA buffer (pH 9.0).



WB result of EPS8 antibody (12455-1-AP; 1:1000; incubated at room temperature for 1.5 hours) with sh-Control and sh-EPS8 transfected HeLa cells.