

For Research Use Only

# EPS8 Polyclonal antibody, PBS Only

Catalog Number: 12455-1-PBS

Featured Product



## Basic Information

**Catalog Number:**

12455-1-PBS

**Size:**

100ug, Concentration: 1 mg/ml by Nanodrop;

**Source:**

Rabbit

**Isotype:**

IgG

**Immunogen Catalog Number:**

AG3121

**GenBank Accession Number:**

BC030010

**GeneID (NCBI):**

2059

**UNIPROT ID:**

Q12929

**Full Name:**

epidermal growth factor receptor pathway substrate 8

**Calculated MW:**

822 aa, 92 kDa

**Observed MW:**

97 kDa

**Purification Method:**

Antigen affinity purification

## Applications

**Tested Applications:**

WB, IHC, IF/ICC, IP, Indirect ELISA

**Species Specificity:**

human

## Background Information

Epidermal growth factor receptor Pathway Substrate 8 (EPS8) is a crucial regulator of the actin cytoskeleton dynamics accompanying cell motility and invasion. This protein contains one PH domain and one SH3 domain leading to its binding activity with multiple cellular targets. EPS8 can function as a unique actin capping protein specifically required for dendritic cell migration and plays roles in the regulation of axonal filopodia in neuronal development and synapse formation. The EPS8 gene may contribute to the development of a subset of colorectal cancers and could have applications in diagnosis and treatment.

## Storage

**Storage:**

Store at -80°C.

**Storage Buffer:**

PBS only, pH7.3

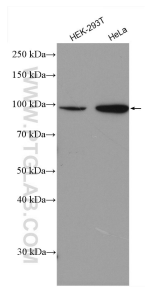
For technical support and original validation data for this product please contact:

T: 1 (888) 4PTGLAB (1-888-478-4522) (toll free in USA), or 1(312) 455-8498 (outside USA)

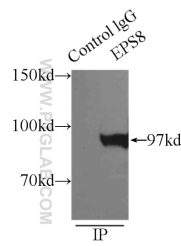
E: [proteintech@ptglab.com](mailto:proteintech@ptglab.com)  
W: [ptglab.com](http://ptglab.com)

**This product is exclusively available under Proteintech Group brand and is not available to purchase from any other manufacturer.**

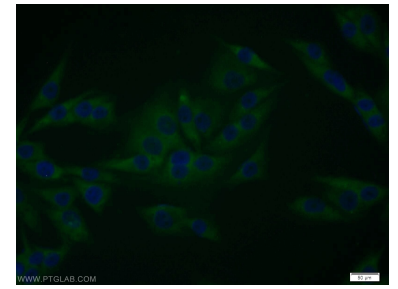
## Selected Validation Data



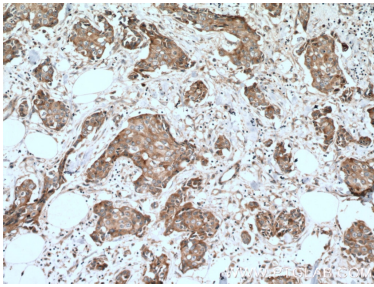
Various lysates were subjected to SDS PAGE followed by western blot with 12455-1-AP (EPS8 antibody) at dilution of 1:1000 incubated at room temperature for 1.5 hours. This data was developed using the same antibody clone with 12455-1-PBS in a different storage buffer formulation.



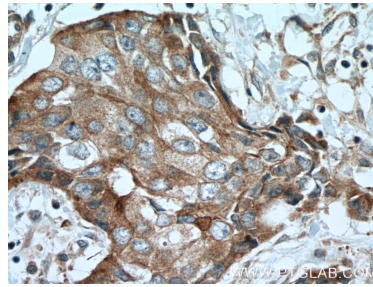
IP result of anti-EPS8 (IP:12455-1-AP, 3 $\mu$ g; Detection:12455-1-AP 1:500) with HeLa cells lysate 3800 $\mu$ g. This data was developed using the same antibody clone with 12455-1-PBS in a different storage buffer formulation.



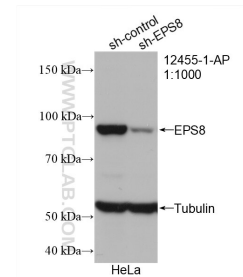
Immunofluorescent analysis of A375 cells using 12455-1-AP (EPS8 antibody) at dilution of 1:25 and Alexa Fluor 488-conjugated AffiniPure Goat Anti-Rabbit IgG(H+L). This data was developed using the same antibody clone with 12455-1-PBS in a different storage buffer formulation.



Immunohistochemical analysis of paraffin-embedded human breast cancer tissue slide using 12455-1-AP (EPS8 antibody) at dilution of 1:100 (under 10x lens. Heat mediated antigen retrieval with Tris-EDTA buffer (pH 9.0). This data was developed using the same antibody clone with 12455-1-PBS in a different storage buffer formulation.



Immunohistochemical analysis of paraffin-embedded human breast cancer tissue slide using 12455-1-AP (EPS8 antibody) at dilution of 1:100 (under 40x lens. Heat mediated antigen retrieval with Tris-EDTA buffer (pH 9.0). This data was developed using the same antibody clone with 12455-1-PBS in a different storage buffer formulation.



WB result of EPS8 antibody (12455-1-AP; 1:1000; incubated at room temperature for 1.5 hours) with sh-Control and sh-EPS8 transfected HeLa cells. This data was developed using the same antibody clone with 12455-1-PBS in a different storage buffer formulation.